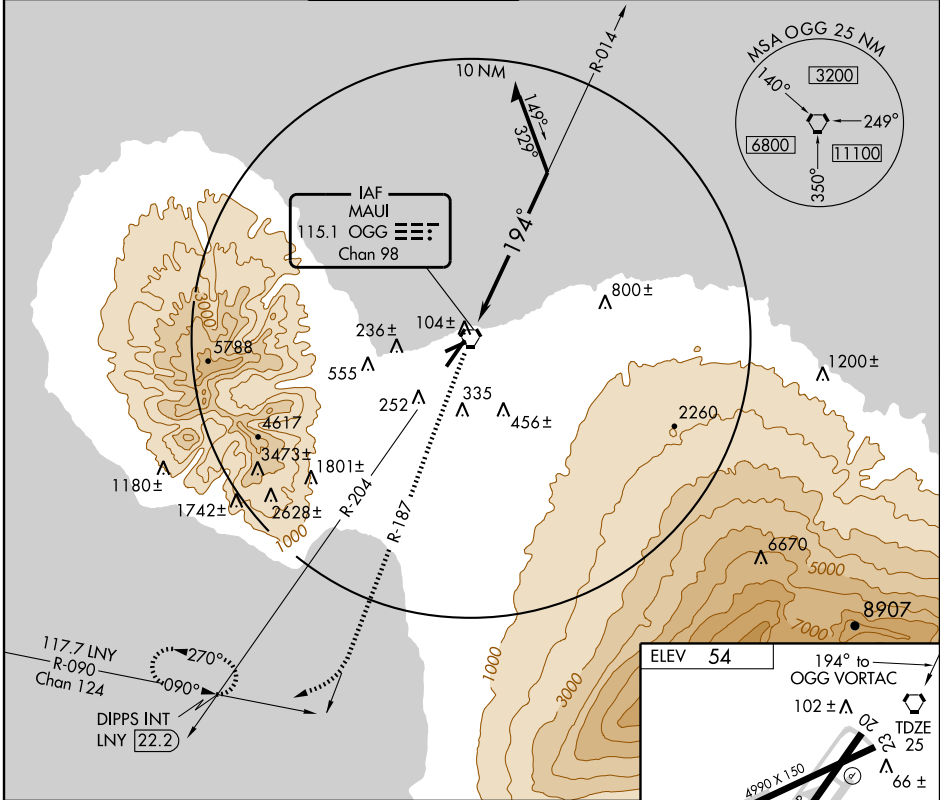


VOR RWY 20
KAHALUI (OGG)(PHOG)

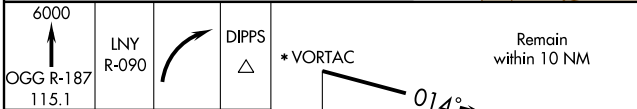
VORTAC OGG 115.1 Chan 98	APP CRS 194°	Rwy Idg TDZE Apt Elev	6995 25 54
--	------------------------	-----------------------------	---------------------------------------

MISSED APPROACH: Climb to 6000 via OGG R-187 to intercept LNY R-090, then climbing right turn direct DIPPS Int and hold.

ATIS 128.6	HCF APPROACH 120.2 322.4 (NORTH) 119.5 225.4 (SOUTH)	MAUI TOWER ★ 118.7 (CTAF) 0 279.6	GND CON 121.9 279.6	CLNC DEL 120.6 290.5	UNICOM 122.95
----------------------	--	---	-------------------------------	--------------------------------	-------------------------



PAC, 22 OCT 2009 to 17 DEC 2009



*Maintain 4500 or above until established outbound for procedure turn.
Maximum procedure turn entry altitude 6500.

0.2

