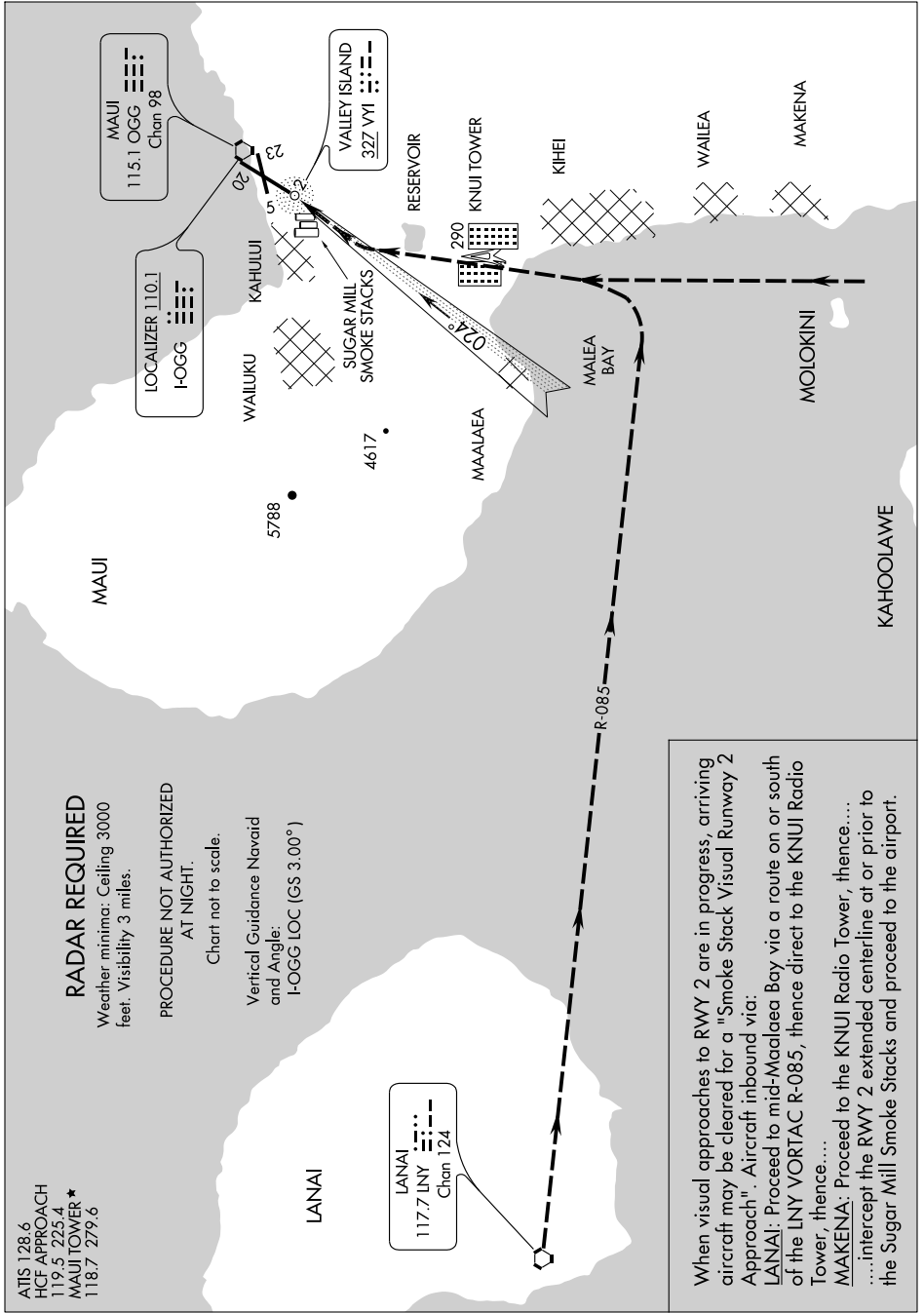


SMOKE STACK VISUAL RWY 2

PAC, 22 OCT 2009 to 17 DEC 2009



RADAR REQUIRED

Weather minima: Ceiling 3000 feet. Visibility 3 miles.

PROCEDURE NOT AUTHORIZED AT NIGHT.

Chart not to scale.

Vertical Guidance Navaid and Angle:
I-OGG LOC (GS 3.00°)

ATIS 128.6
HCF APPROACH 119.5 225.4
MAUI TOWER ★ 118.7 279.6

When visual approaches to RWY 2 are in progress, arriving aircraft may be cleared for a "Smoke Stack Visual Runway 2 Approach". Aircraft inbound via:

LANAI: Proceed to mid-Maalaea Bay via a route on or south of the LNY VORTAC R-085, thence direct to the KNUJI Radio Tower, thence....

MAKENA: Proceed to the KNUJI Radio Tower, thence....

..... intercept the RWY 2 extended centerline at or prior to the Sugar Mill Smoke Stacks and proceed to the airport.

PAC, 22 OCT 2009 to 17 DEC 2009

SMOKE STACK VISUAL RWY 2

20°54'N-156°26'W

KAHULUI, HAWAII
KAHULUI (OGG)(PHOG)