

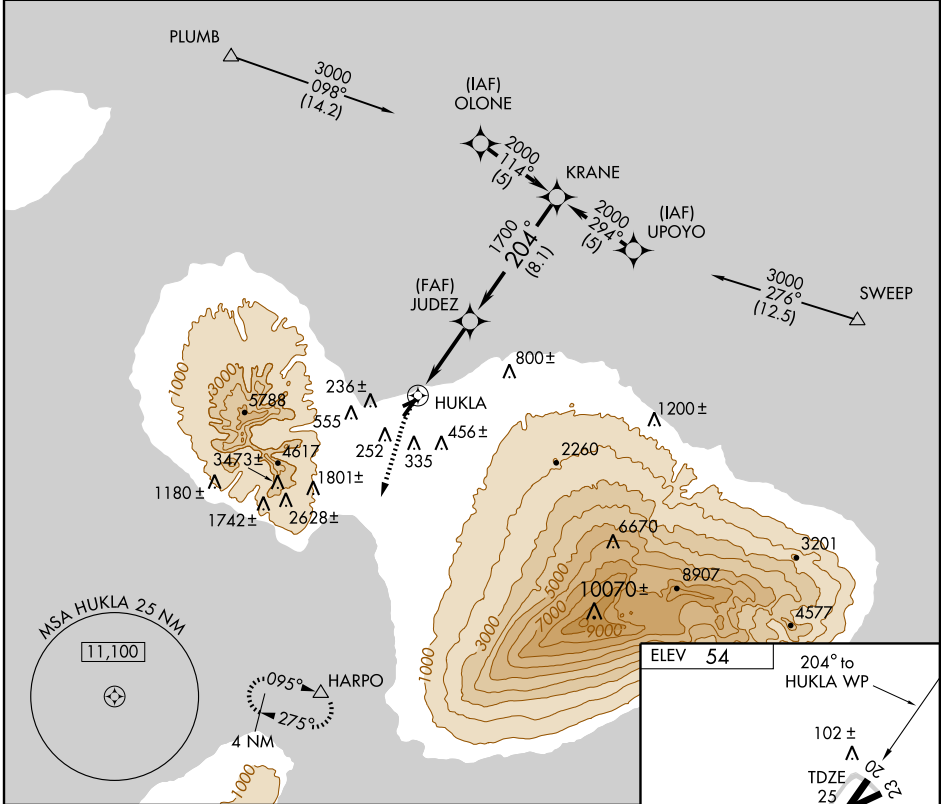
RNAV (GPS) RWY 20

KAHULUI (OGG)(PHOG)

APP CRS 204°	Rwy Idg 6995
	TDZE 25
	Apt Elev 54

NA	GPS or RNP-0.3 Required. DME/DME RNP-0.3 NA.	MISSED APPROACH: Climbing left turn to 6000 direct HARPO WP and hold.			
-----------	---	---	--	--	--

ATIS 128.6	HCF APPROACH 120.2 322.4 (NORTH) 119.5 225.4 (SOUTH)	MAUI TOWER ★ 118.7(CTAF) 279.6	GND CON 121.9 279.6	CLNC DEL 120.6 290.5	UNICOM 122.95
----------------------	--	--	-------------------------------	--------------------------------	-------------------------



PAC, 22 OCT 2009 to 17 DEC 2009

PAC, 22 OCT 2009 to 17 DEC 2009

6000	HARPO	KRANE		
	△	2000		
		JUDEZ	Procedure Turn NA	
		HUKLA	204°	
			1700	
			3.00° TCH 75	
			8.1 NM	
CATEGORY	A	B	C	D
RNAV MDA	400-1	375 (400-1)		400-1¼ 375 (400-1¼)
CIRCLING	660-1 606 (700-1)	720-1 666 (700-1)	780-2 726 (800-2)	800-2½ 746 (800-2½)

