

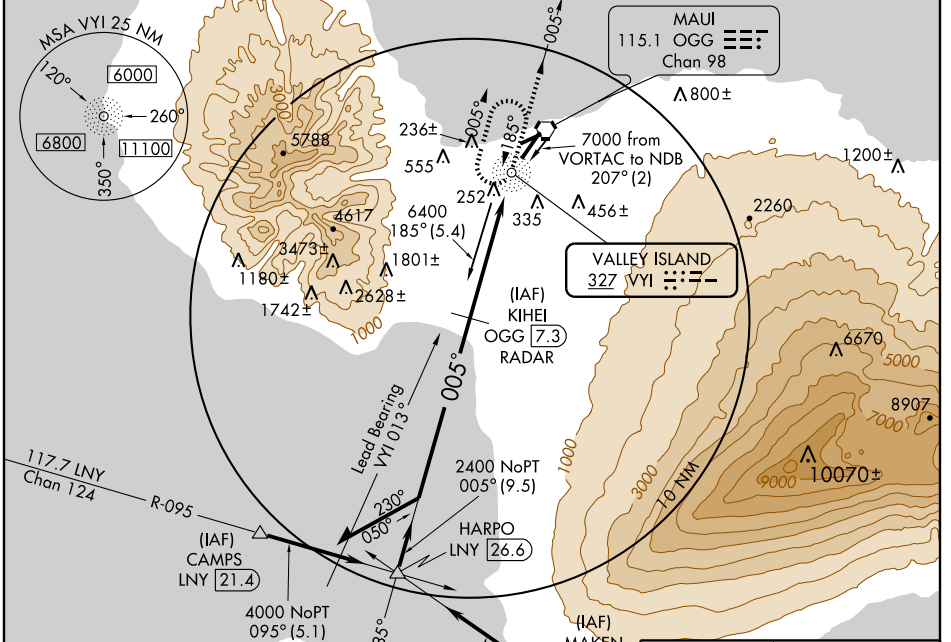
NDB/DME RWY 2

KAHALUI (OGG)(PHOG)

NDB VYI 327	APP CRS 005°	Rwy Idg TDZE 54 Apt Elev 54
-----------------------	------------------------	---

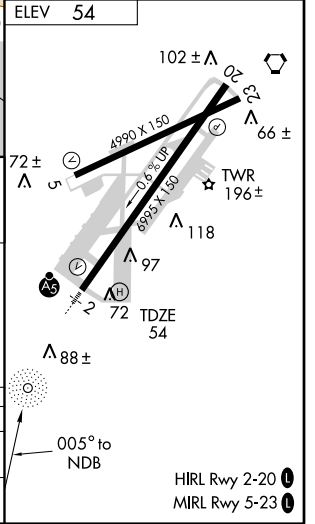
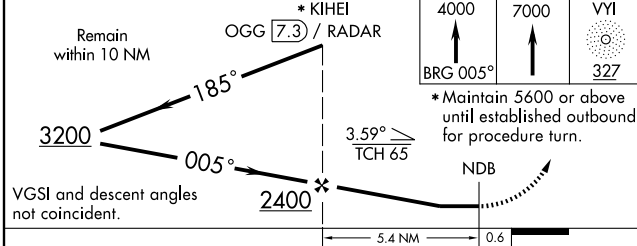
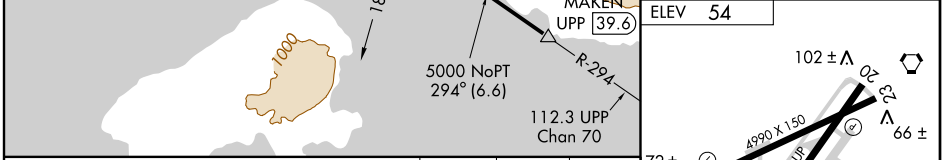
	MALSR 	MISSED APPROACH: Climb to 4000 via 005° bearing from VYI NDB then climb to 7000 direct VYI NDB and hold.
--	-----------	--

ATIS 128.6	HCF APPROACH 120.2 322.4 (NORTH) 119.5 225.4 (SOUTH)	MAUI TOWER ★ 118.7 (CTAF) 0 279.6	GND CON 121.9 279.6	CLNC DEL 120.6 290.5	UNICOM 122.95
----------------------	--	---	-------------------------------	--------------------------------	-------------------------



PAC, 22 OCT 2009 to 17 DEC 2009

PAC, 22 OCT 2009 to 17 DEC 2009



CATEGORY	A	B	C	D
S-2	640- ³ / ₄ 586 (600- ³ / ₄)		640-1 ¹ / ₂ 586 (600-1 ¹ / ₂)	640-1 ³ / ₄ 586 (600-1 ³ / ₄)
CIRCLING	640-1 586 (600-1)		640-1 ¹ / ₂ 586 (600-1 ¹ / ₂)	640-2 586 (600-2)