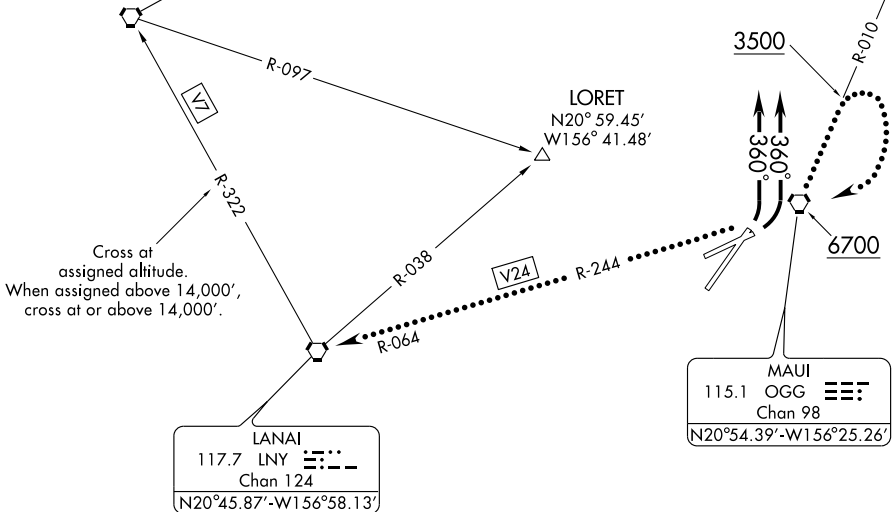


MAUI FIVE DEPARTURE

ATIS 128.6
CLNC DEL
120.6 290.5
GND CON
121.9 279.6
MAUI TOWER ★
118.7 (CTAF) 279.6
HCF APPROACH
120.2 322.4

MOLOKAI
116.1 MKK 
Chan 108



NOTE: Take-off requires minimum climb
of 420' per NM until reaching 8000'.

NOTE: Chart not to scale.

PAC, 22 OCT 2009 to 17 DEC 2009

PAC, 22 OCT 2009 to 17 DEC 2009



DEPARTURE ROUTE DESCRIPTION

TAKE-OFF RUNWAYS 2 AND 5 ONLY: After take-off, all aircraft fly heading 360°, expect radar vectors west of Maui Island to assigned fix/route. Cross the LNY R-322 at assigned altitude. When assigned above 14,000', cross at or above 14,000'.

LOST COMMUNICATIONS: If not in contact with Departure Control 1 minute after crossing the shoreline, climb northbound via the OGG R-010 until reaching at least 3500'. Then reverse course to the right direct OGG VORTAC. Then via V24 to LNY VORTAC. Cross OGG VORTAC at or above 6700'.