
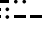
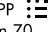


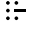
BEACH TWO DEPARTURE

ATIS 128.6
CLNC DEL
120.6 290.5
GND CON
121.9 279.6
MAUI TOWER ★
118.7 (CTAF) 279.6
HCF APPROACH
119.5 225.4

MAUI
115.1 OGG 
Chan 98

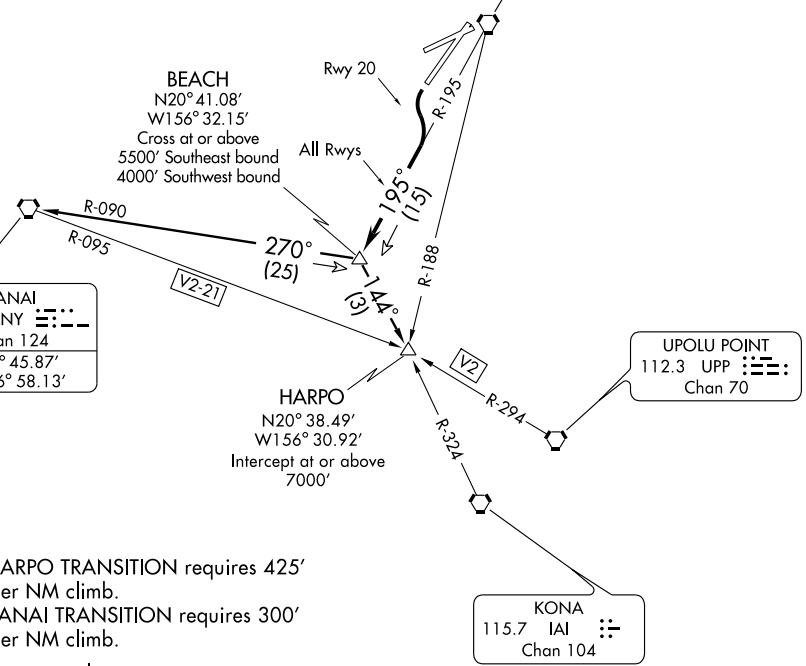
LANAI
117.7 LNY 
Chan 124
N20° 45.87'
W156° 58.13'

UPOLU POINT
112.3 UPP 
Chan 70

KONA
115.7 IAI 
Chan 104

BEACH
N20° 41.08'
W156° 32.15'
Cross at or above
5500' Southeast bound
4000' Southwest bound

HARPO
N20° 38.49'
W156° 30.92'
Intercept at or above
7000'



NOTE: HARPO TRANSITION requires 425' per NM climb.
LANAI TRANSITION requires 300' per NM climb.
NOTE: Chart not to scale.

PAC, 22 OCT 2009 to 17 DEC 2009

PAC, 22 OCT 2009 to 17 DEC 2009

DEPARTURE ROUTE DESCRIPTION

TAKE-OFF RUNWAYS 2, 5, AND 23: Maintain flight in visual conditions until intercepting the OGG R-195, then climb southbound via the OGG R-195 to BEACH INT.

TAKE-OFF RUNWAY 20: Turn left to intercept the OGG R-195, then climb southbound via the OGG R-195 to BEACH INT.

HARPO TRANSITION (BEACH2.HARPO): Cross BEACH INT at or above 5500', turn left, continue to climb southbound via IAI R-324 to intercept V2 at or above 7000'.

LANAI TRANSITION (BEACH2.LNY): Cross BEACH INT at or above 4000', turn right, continue climb to 5000' or above via LNY R-090 to LNY VORTAC.

BEACH TWO DEPARTURE