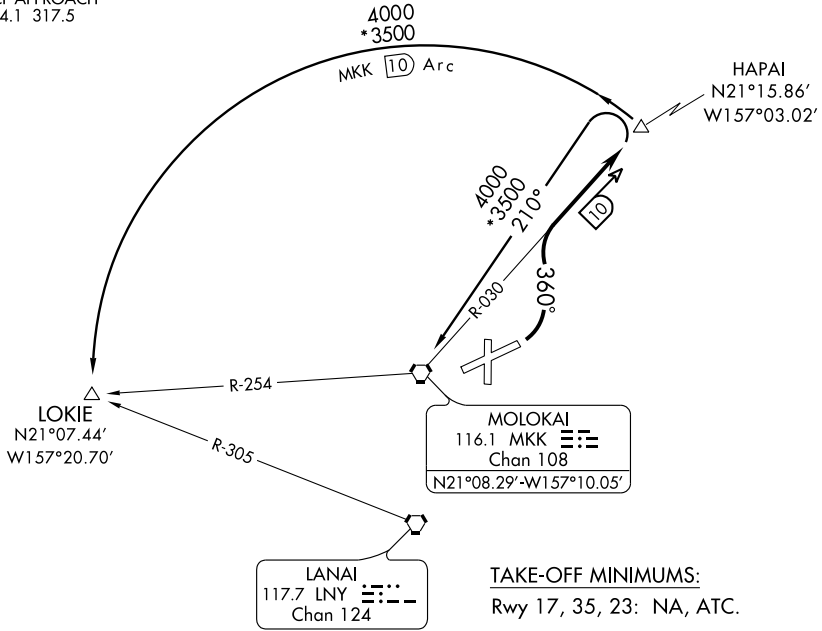


HAPAI TWO DEPARTURE

ATIS
128.2
GND CON
121.9
MOLOKAI TOWER★
125.7 (CTAF) 306.2
HCF APPROACH
124.1 317.5



TAKE-OFF MINIMUMS:
Rwy 17, 35, 23: NA, ATC.

Rwy 5: STANDARD with minimum obstacle climb of 395' per NM to 1600'.

NOTE: DME Required.

TAKE-OFF OBSTACLES:

- Rwy 5: Pole 2254' from DER, 222' right of centerline, 45' AGL/565' MSL.
- Tree 1.12 NM from DER, 720' right of centerline, 50' AGL/675' MSL.
- Fenceline beginning 147' from DER, 177' left of centerline, up to 12' AGL/471' MSL.
- Multiple trees and bushes beginning 50' from DER, 273' left of centerline, up to 50' AGL/551' MSL.
- Obstruction light 1366' from DER, 79' right of centerline, 30' AGL/528' MSL.
- Multiple poles beginning 3065' from DER, 644' left of centerline, up to 45' AGL/623' MSL.
- Multiple trees beginning 4155' from DER, 184' right of centerline, up to 50' AGL/714' MSL.

NOTE: Chart not to scale

DEPARTURE ROUTE DESCRIPTION

TAKE-OFF RUNWAY 5: Climbing left turn via 360° heading and MKK VORTAC R-030 to HAPAI/10 DME. Thence. . . .

. . . . via (Transition). Maintain 4,000.

LOKIE TRANSITION (HAPAI2.LOKIE): From over HAPAI via MKK VORTAC 10 DME Arc CCW to LOKIE.

MOLOKAI TRANSITION (HAPAI2.MKK): From over HAPAI via 210° heading and MKK R-030 to MKK VORTAC.