

(BLUSH1 .BLUSH) 07074  
**BLUSH ONE DEPARTURE**

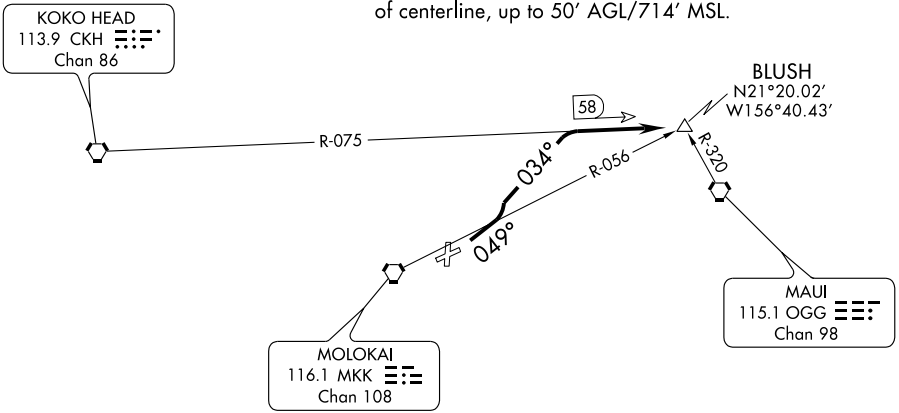
SL-759 (FAA)

KAUNAKAKAI/MOLOKAI (MKK) (PHMK)  
 KAUNAKAKAI, HAWAII

ATIS  
 128.2  
 GND CON  
 121.9  
 MOLOKAI TOWER ★  
 125.7 (CTAF) 306.2  
 HCF APPROACH  
 124.1 317.5

TAKE-OFF OBSTACLES:

Rwy 5: Pole 2254' from DER, 222' right of centerline, 45' AGL/565' MSL.  
 Tree 1.12 NM from DER, 720' right of centerline, 50' AGL/675' MSL.  
 Fenceline beginning 147' from DER, 177' left of centerline, up to 12' AGL/471' MSL.  
 Multiple trees and bushes beginning 50' from DER, 273' left of centerline, up to 50' AGL/551' MSL.  
 Obstruction light 1366' from DER, 79' right of centerline, 30' AGL/528' MSL.  
 Multiple poles beginning 3065' from DER, 644' left of centerline, up to 45' AGL/623' MSL.  
 Multiple trees beginning 4155' from DER, 184' right of centerline, up to 50' AGL/714' MSL.



TAKE-OFF MINIMUMS:  
 Rwy 17, 35, 23: NA, ATC.

Rwy 5: STANDARD with minimum obstacle climb of 395' per NM to 1600'.

NOTE: Chart not to scale.

**DEPARTURE ROUTE DESCRIPTION**

TAKE-OFF RUNWAY 5: Climb via 049° heading to 860, then climbing left turn to 5000 via 034° heading and CKH R-075 to BLUSH INT.

**BLUSH ONE DEPARTURE**  
 (BLUSH1 .BLUSH) 07074

KAUNAKAKAI, HAWAII  
 KAUNAKAKAI/MOLOKAI (MKK) (PHMK)

PAC, 22 OCT 2009 to 17 DEC 2009

PAC, 22 OCT 2009 to 17 DEC 2009