

HILO, HAWAII

AL-756 (FAA)

VOR/DME or TACAN RWY 26

HILO INTL (ITO) (PHTO)

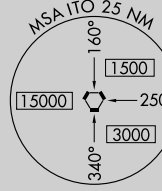
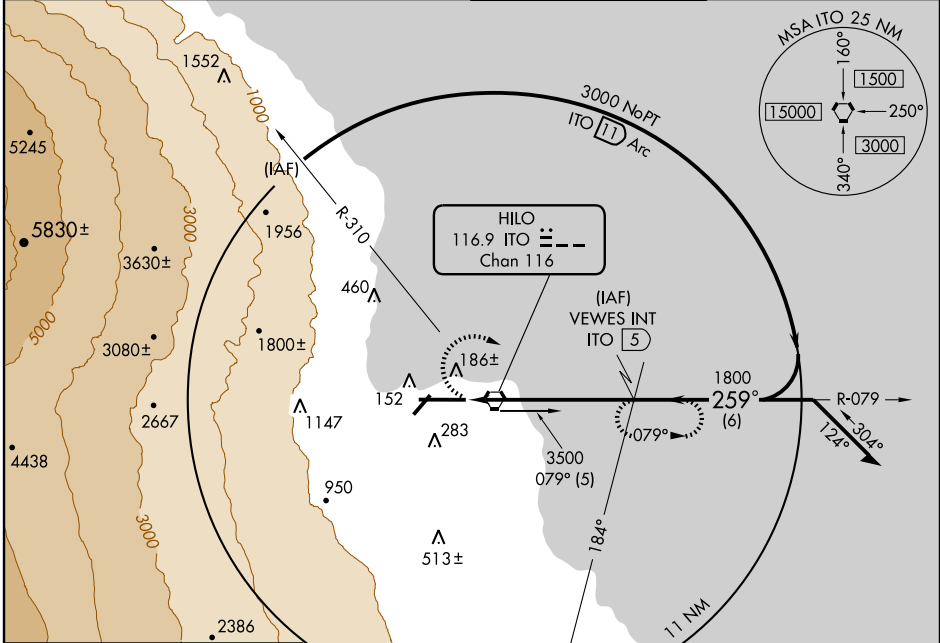
VORTAC ITO 116.9 Chan 116	APP CRS 259°	Rwy Idg 9800 TDZE 38 Apt Elev 38
---	------------------------	---

▼ Circling not authorized south of Rwy 8-26. Visibility reduction for helicopters NA. For inoperative MALSRR increase S-26 Cat. A/B and D visibility ¼ mile.



MISSED APPROACH: Climbing right turn to 3000 via ITO R-079 to VEWES/5 DME and hold.

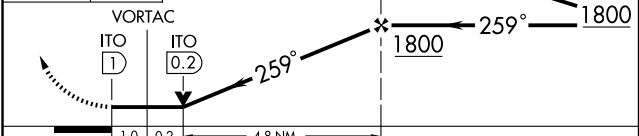
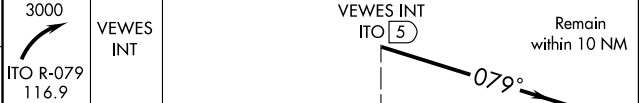
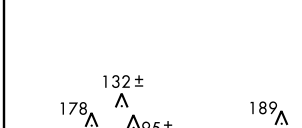
ATIS 126.4	HILO APP CON 119.7 269.2	HILO TOWER ★ 118.1 (CTAF) 263.1	GND CON 121.9
----------------------	------------------------------------	--	-------------------------



PAC, 22 OCT 2009 to 17 DEC 2009

PAC, 22 OCT 2009 to 17 DEC 2009

ELEV 38



CATEGORY	A	B	C	D
S-26	460-¾	422 (500-¾)		460-1 422 (500-1)
CIRCLING		500-1½	462 (500-1½)	700-2 662 (700-2)

REIL Rwy 3
MIRL Rwy 3-21
HIRL Rwy 8-26

HILO, HAWAII
Amdt 5C 09071

19°43'N-155°03'W

HILO INTL (ITO) (PHTO)

VOR/DME or TACAN RWY 26