

# RNAV (GPS) RWY 26

HILO INTL (ITO) (PHTO)

APP CRS	Rwy ldg	<b>9800</b>
<b>259°</b>	TDZE	<b>38</b>
	Apt Elev	<b>38</b>

**⚠** Circling not authorized south of Rwy 8-26.  
 For inoperative MALSR increase LNAV Cat A, B & D ½ mile.  
**⚠** NA Baro-VNAV NA below -5°C (23°F).  
 GPS or RNP-0.3 Required. DME/DME RNP-0.3 NA.  
 WAAS VNAV NA.

**MALSR**

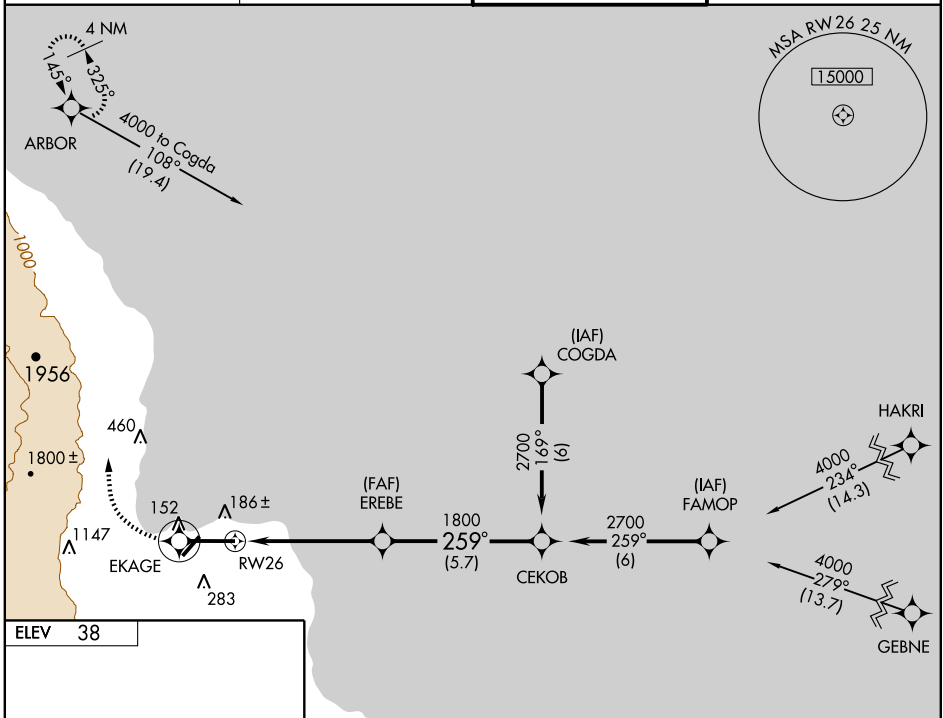
**MISSED APPROACH:** Climb to 5000  
 direct EKAGE WP then right turn  
 direct ARBOR WP and hold.

**ATIS**  
**126.4**

**HILO APP CON**  
**119.7 269.2**

**HILO TOWER\***  
**118.1(CTAF) 0 263.1**

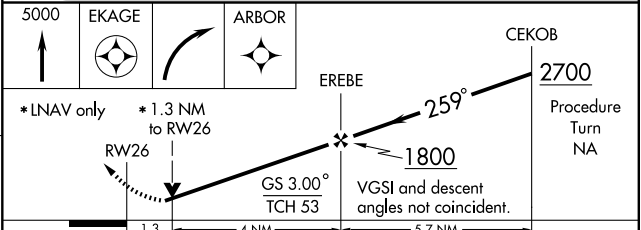
**GND CON**  
**121.9**



PAC, 22 OCT 2009 to 17 DEC 2009

PAC, 22 OCT 2009 to 17 DEC 2009

**ELEV 38**



CATEGORY	A	B	C	D
GLS PA DA	NA			
LNAV/ VNAV DA	440-1 402 (500-1)			
LNAV MDA	440-3/4	402 (500-3/4)	440-1 402 (500-1)	
CIRCLING	500-1 1/2	462 (500-1 1/2)	700-2 662 (700-2)	

REIL Rwy 3  
 MIRL Rwy 3-21 **⦿**  
 HIRL Rwy 8-26 **⦿**