

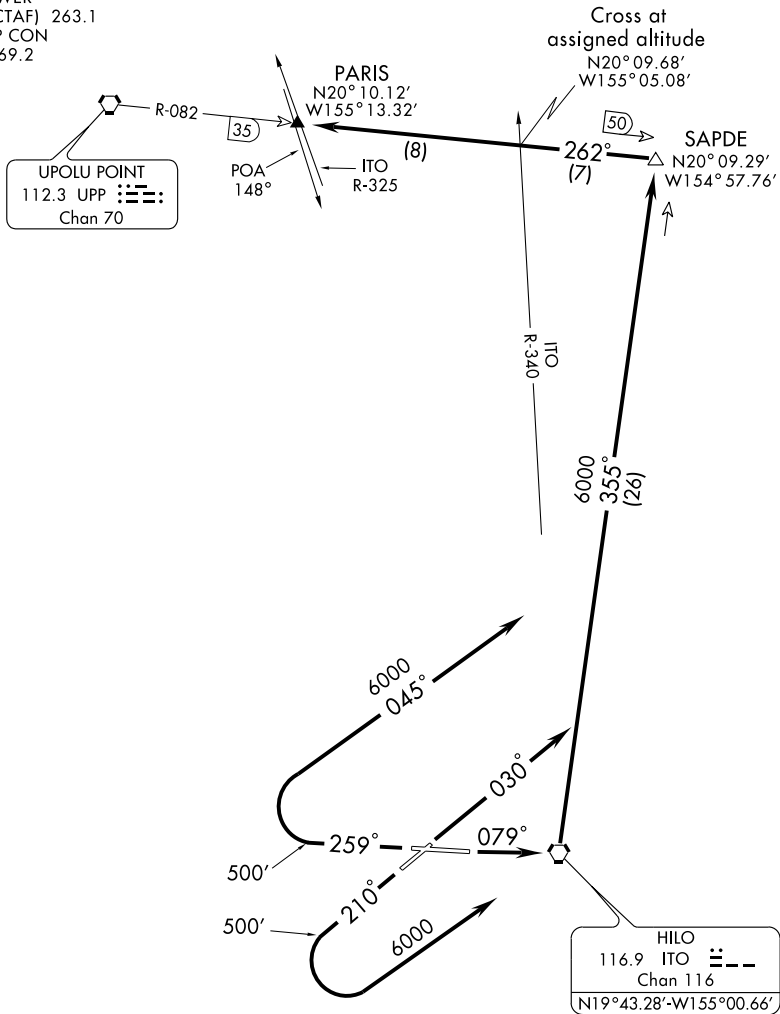
(PARIS3.PARIS) 07018

SL-756 (FAA)

PARIS THREE DEPARTURE (OBSTACLE)

HILO INTL (ITO)(PHTO)
HILO, HAWAII

ATIS 126.4
GND CON
121.9
HILO TOWER ★
118.1 (CTAF) 263.1
HILO DEP CON
119.7 269.2



Cross at
assigned altitude
N20°09.68'
W155°05.08'

PAC, 22 OCT 2009 to 17 DEC 2009

PAC, 22 OCT 2009 to 17 DEC 2009

TAKE OFF MINIMUMS:

Rwy 3, 8: STANDARD.

Rwy 21: Standard with minimum climb of 310 feet per NM to 1100 or 1300-2½ for climb in visual conditions.

Rwy 26: Standard with minimum climb of 444 feet per NM to 2500 or 1300-2½ for climb in visual conditions.

NOTE: Chart not to scale.

(NARRATIVE ON FOLLOWING PAGE)

PARIS THREE DEPARTURE (OBSTACLE)

(PARIS3.PARIS) 07018

HILO, HAWAII
HILO INTL (ITO)(PHTO)