

HILO, HAWAII


AL-756 (FAA)

LOC/DME I-TO 110.7 Chan 44	APP CRS 259°	Rwy Idg 9800 TDZE 38 Apt Elev 38
--	------------------------	---

ILS or LOC RWY 26

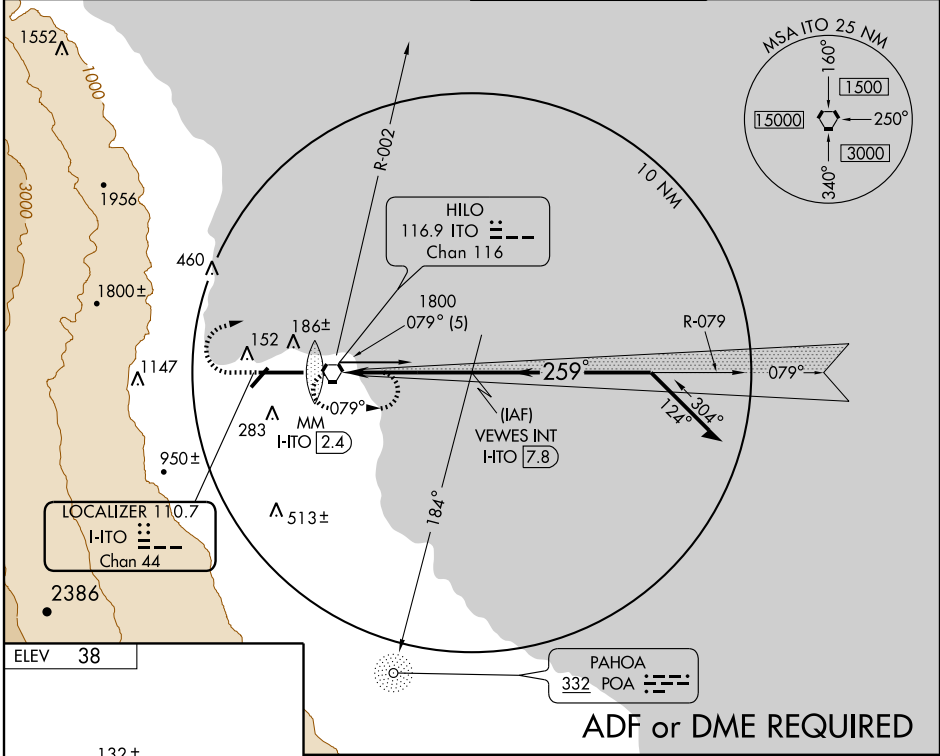
HILO INTL (ITO) (PHTO)

⚠ Circling not authorized south of Rwy 8-26. For inoperative MALSR increase S-LOC 26 vis to 1 mile all Cats. Inoperative table does not apply to S-ILS 26. ADF or DME required.

MALSR 

MISSED APPROACH: Climb to 450 then climbing right turn to 3000 via ITO R-002 then direct ITO VORTAC and hold.

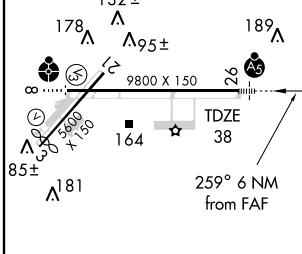
ATIS 126.4	HILO APP CON 119.7 269.2	HILO TOWER★ 118.1(CTAF) 263.1	GND CON 121.9
----------------------	------------------------------------	---	-------------------------



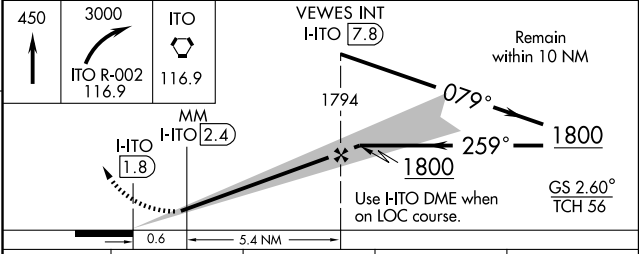
PAC, 22 OCT 2009 to 17 DEC 2009

PAC, 22 OCT 2009 to 17 DEC 2009

ELEV 38



REIL Rwy 3	MIRL Rwy 3-21	HIRL Rwy 8-26			
FAF to MAP 6 NM					
Knots	60	90	120	150	180
Min:Sec	6:00	4:00	3:00	2:24	2:00



CATEGORY	A	B	C	D
S-ILS 26	288-1		250 (300-1)	
S-LOC 26	420-¾		382 (400-¾)	
CIRCLING	500-1	462 (500-1)	500-1½ 462 (500-1½)	700-2 662 (700-2)

HILO, HAWAII
Amdt 12B 09071

19°43'N-155°03'W

HILO INTL (ITO) (PHTO)

ILS or LOC RWY 26