

# RNAV (GPS) Y RWY 8L

HONOLULU INTL (HNL) (PHNL)

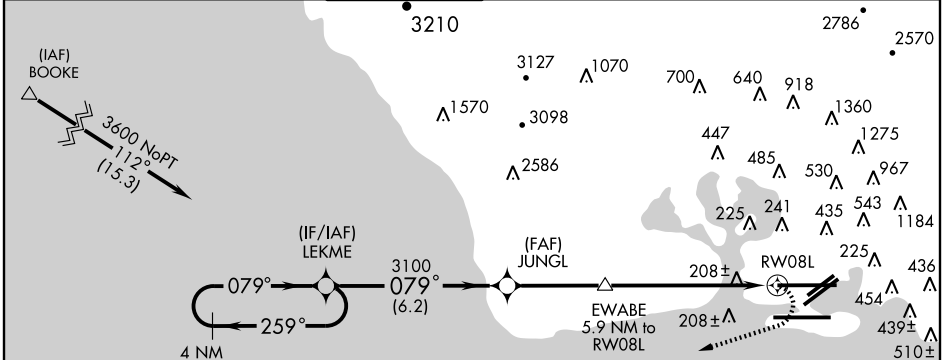
APP CRS	Rwy Idg	<b>12300</b>
<b>079°</b>	TDZE	<b>13</b>
	Apt Elev	<b>13</b>

**▼** DME/DME RNP-0.3 NA Cat. A, B, C circling NA northwest of airport between Rwy 8L-26R and 4L-22R. Cat. D, E circling NA north of Rwy 8L-26R.

**MALSR**

**MISSED APPROACH:** Climbing right turn to 3600 direct GECKO and hold.

ATIS <b>127.9 251.15</b>	HCF APPROACH <b>118.3 269.0</b>	HONOLULU TOWER <b>118.1 257.8</b>	GND CON <b>121.9 348.6</b>	CLNC DEL <b>121.4 281.4</b>	RAMP CONTROL <b>121.8</b>
-----------------------------	------------------------------------	--------------------------------------	-------------------------------	--------------------------------	------------------------------

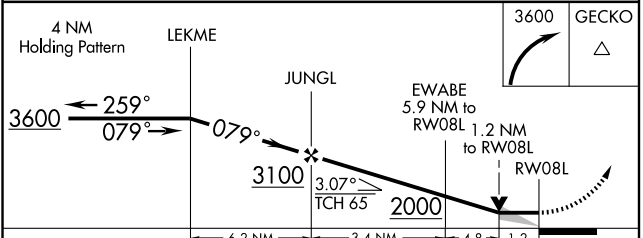
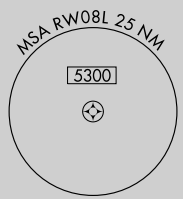
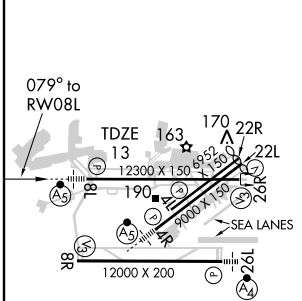


NOTE: 208± Ships in Pearl Harbor Channel.

PAC, 22 OCT 2009 to 17 DEC 2009

PAC, 22 OCT 2009 to 17 DEC 2009

ELEV	<b>13</b>
SEALANES:	8W-26W 5000 X 300 4W-22W 3000 X 150



CATEGORY	A	B	C	D	E
LNAV MDA	460-1/2	447 (500-1/2)	460-3/4 447 (500-3/4)	460-1	447 (500-1)
CIRCLING	620-1	607 (700-1)	620-1 3/4 607 (700-1 3/4)	820-2 1/2 807 (900-2 1/2)	1660-3 1647 (1700-3)

MIRL Rwy 4L-22R  
 REIL Rwy 4L, 8R, 22L, 22R and 26R  
 HIRL Rwy 4R-22L, 8L-26R and 8R-26L