

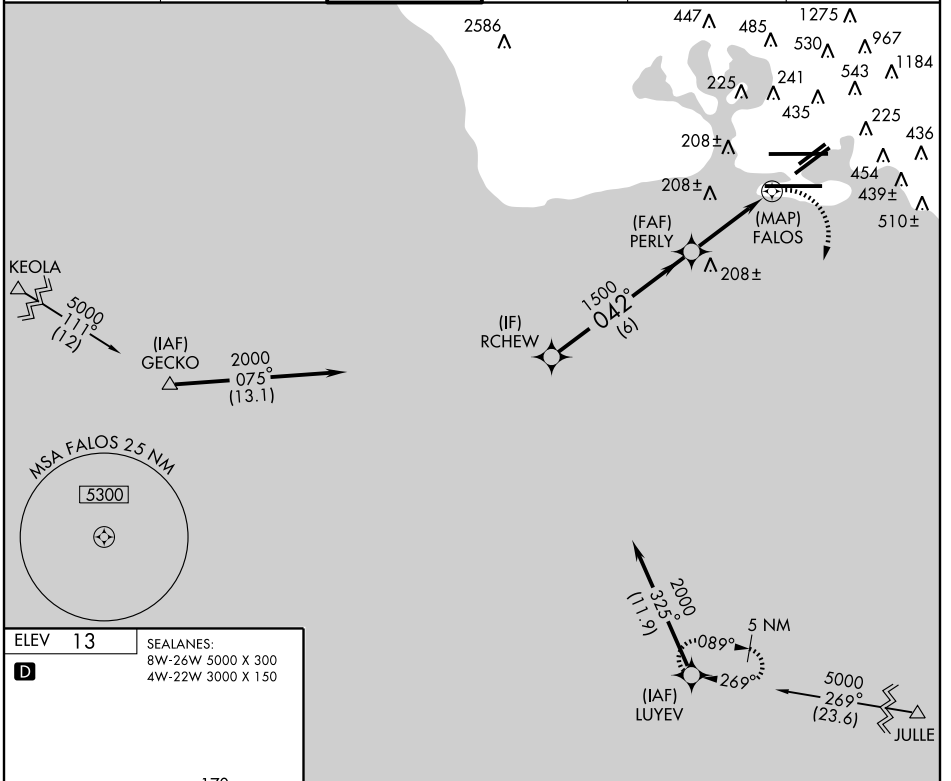
APP CRS	Rwy Idg	9000
042°	TDZE	9
	Apt Elev	13

RNAV (GPS) Y RWY 4R

HONOLULU INTL (HNL) (PHNL)

	DME/DME RNP-0.3 NA. For inoperative MALSR increase Cat E visibility to 1½. Cat A,B,C circling NA NW of airport between Rwys 8L-26R and 4L-22R. Cat D, E circling NA N of Rwy 8L-26R.	MALSR 	MISSED APPROACH: Climbing right turn to 5000 direct LUYEV and hold, continue climb-in-hold to 5000.
--	---	-----------	---

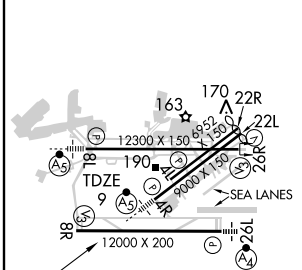
ATIS 127.9 251.15	HCF APPROACH 118.3 269.0	HONOLULU TOWER 118.1 257.8	GND CON 121.9 348.6	CLNC DEL 121.4 281.4	RAMP CONTROL 121.8
-----------------------------	------------------------------------	--------------------------------------	-------------------------------	--------------------------------	------------------------------



PAC, 22 OCT 2009 to 17 DEC 2009

PAC, 22 OCT 2009 to 17 DEC 2009

ELEV	13
SEALANES:	8W-26W 5000 X 300 4W-22W 3000 X 150



MIRL Rwy 4L-22R
 REIL Rwys 4L, 8R, 22L, 22R and 26R
 HIRL Rwys 4R-22L, 8L-26R and 8R-26L

Procedure Turn NA VGSIs and descent angles not coincident.	RCHEW 2000 Procedure Turn NA		PERLY 1500 042°		FALOS 5000 LUYEV	
	6 NM		3.5 NM		1 NM	
CATEGORY	A	B	C	D	E	
LNAV MDA	460-¾ 451 (500-¾)			460-1 451 (500-1)		
CIRCLING	620-1¼	607 (700-1¼)	620-1¾ 607 (700-1¾)	820-2½ 807 (900-2½)	1500-3 1487 (1500-3)	