

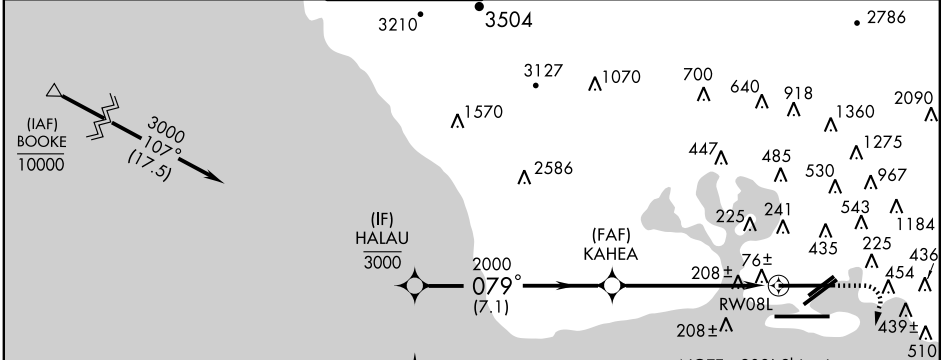
|             |          |              |
|-------------|----------|--------------|
| APP CRS     | Rwy Idg  | <b>12300</b> |
| <b>079°</b> | TDZE     | <b>13</b>    |
|             | Apt Elev | <b>13</b>    |

# RNAV (RNP) Z RWY 8L

HONOLULU INTL (HNL) (PHNL)

|      |   |  |   |
|------|---|--|---|
| <br> | GPS REQUIRED. For uncompensated Baro-VNAV systems, procedure NA below 15°C (58°F) or above 49°C (121°F). For inoperative MALSR increase RNP 0.30 visibility to 1½ all Cats. |  | MISSED APPROACH: Climb to 700 then climbing right turn to 3000 direct ALANA and hold. |
|------|---|--|---|

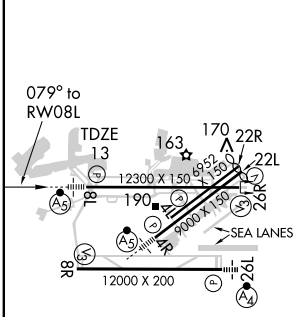
|                     |                    |                    |                    |                    |              |
|---------------------|--------------------|--------------------|--------------------|--------------------|--------------|
| ATIS                | HCF APPROACH       | HONOLULU TOWER     | GND CON            | CLNC DEL           | RAMP CONTROL |
| <b>127.9 251.15</b> | <b>118.3 269.0</b> | <b>118.1 257.8</b> | <b>121.9 348.6</b> | <b>121.4 281.4</b> | <b>121.8</b> |



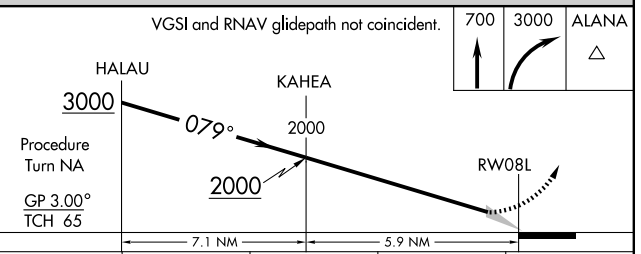
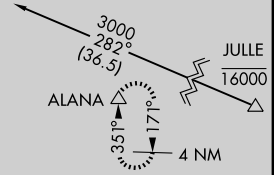
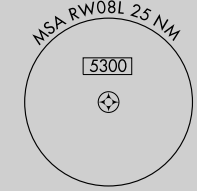
PAC, 22 OCT 2009 to 17 DEC 2009

PAC, 22 OCT 2009 to 17 DEC 2009

|      |           |                   |
|------|-----------|-------------------|
| ELEV | <b>13</b> | SEALANES:         |
|      |           | 8W-26W 5000 X 300 |
|      |           | 4W-22W 3000 X 150 |



MIRL Rwy 4L-22R  
 REIL Rwys 4L, 8R, 22L, 22R and 26R  
 HIRL Rwys 4R-22L, 8L-26R and 8R-26L



|             |   |       |             |   |
|-------------|---|-------|-------------|---|
| CATEGORY    | A | B     | C           | D |
| RNP 0.30 DA |   | 344-¾ | 331 (400-¾) |   |

**SPECIAL AIRCRAFT & AIRCREW AUTHORIZATION REQUIRED**