

RNAV (RNP) Z RWY 4R

HONOLULU INTL (HNL) (PHNL)

APP CRS	Rwy Idg	9000
042°	TDZE	9
	Apt Elev	13

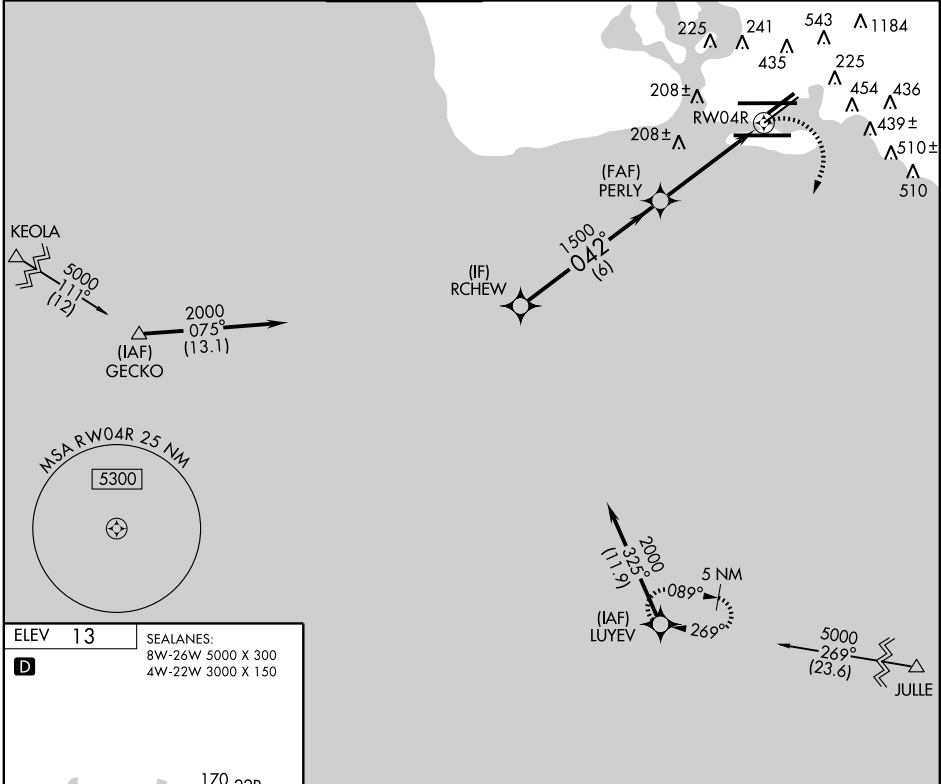
GPS Required. For uncompensated Baro-VNAV systems, procedure NA below 16°C (60°F) or above 48°C (119°F). For inoperative MALSR, increase RNP 0.30 visibility to 2¼.

NA

MALSR


MISSED APPROACH: Climbing right turn to 5000 direct LUYEV and hold.

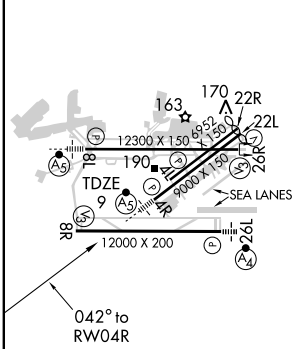
ATIS 127.9 251.15	HCF APPROACH 118.3 269.0	HONOLULU TOWER 118.1 257.8	GND CON 121.9 348.6	CLNC DEL 121.4 281.4	RAMP CONTROL 121.8
-----------------------------	------------------------------------	--------------------------------------	-------------------------------	--------------------------------	------------------------------



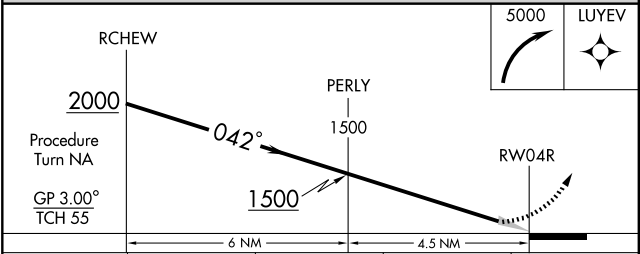
PAC, 22 OCT 2009 to 17 DEC 2009

PAC, 22 OCT 2009 to 17 DEC 2009

ELEV 13	SEALANES: 8W-26W 5000 X 300 4W-22W 3000 X 150
---------	---



MIRL Rwy 4L-22R
 REIL Rwys 4L, 8R, 22L, 22R and 26R
 HIRL Rwys 4R-22L, 8L-26R and 8R-26L



CATEGORY	A	B	C	D
RNP 0.30 DA		658-1¾	649 (700-1¾)	

SPECIAL AIRCRAFT & AIRCREW AUTHORIZATION REQUIRED