

RNAV (RNP) RWY 26L

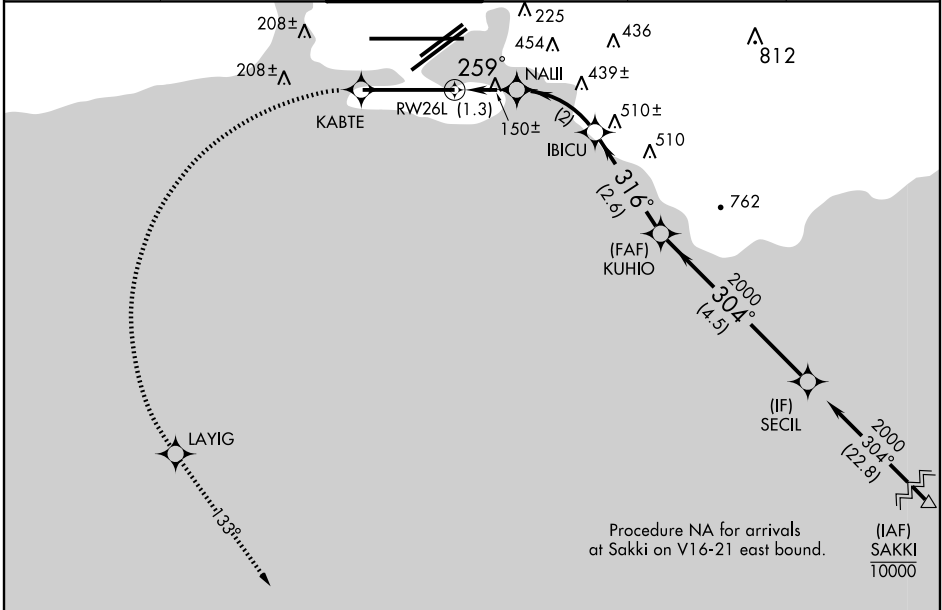
HONOLULU INTL (HNL) (PHNL)

APP CRS	Rwy Idg	12000
259°	TDZE	10
	Apt Elev	13

RF and GPS REQUIRED. For uncompensated Baro-VNAV systems, procedure NA below 15°C (58°F) or above 49°C (121°F).
NA For inoperative MALSF, increase RNP 0.15 visibility to 1 all Cats.
 * Missed approach requires a minimum climb of 234' per NM to 300.

MALSF MISSED APPROACH: Climb to 3000 via 259° track to KABTE, left turn via 4.9 radius to LAYIG, 133° track to ALANA and hold.

ATIS	HCF APPROACH	HONOLULU TOWER	GND CON	CLNC DEL	RAMP CONTROL
127.9 251.15	118.3 269.0	118.1 257.8	121.9 348.6	121.4 281.4	121.8



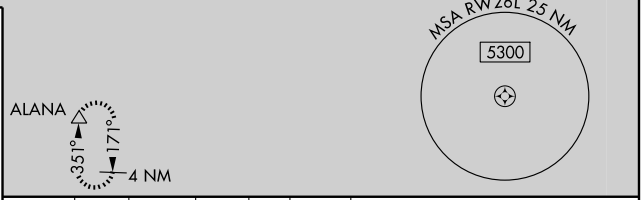
PAC, 22 OCT 2009 to 17 DEC 2009

PAC, 22 OCT 2009 to 17 DEC 2009

ELEV 13

SEALANES:
 8W-26W 5000 X 300
 4W-22W 3000 X 150

MIRL Rwy 4L-22R
 REIL Rwy 4L, 8R, 22L, 22R and 26R
 HIRL Rwy 4R-22L, 8L-26R and 8R-26L



3000	KABTE	LAYIG	TRK 133°	ALANA	KUHIO	SECIL
↑						
TRK 259°						Procedure Turn NA
	NALII	IBICU	316°	304°	2000	2000
	RW26L	512	1154			
	1.3 NM	2 NM	2.6 NM	4.5 NM		
CATEGORY	A	B	C	D		
RNP 0.15 DA*	260-1/2		250 (300-1/2)			

SPECIAL AIRCRAFT & AIRCREW AUTHORIZATION REQUIRED