

# LDA/DME RWY 26L

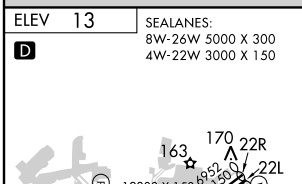
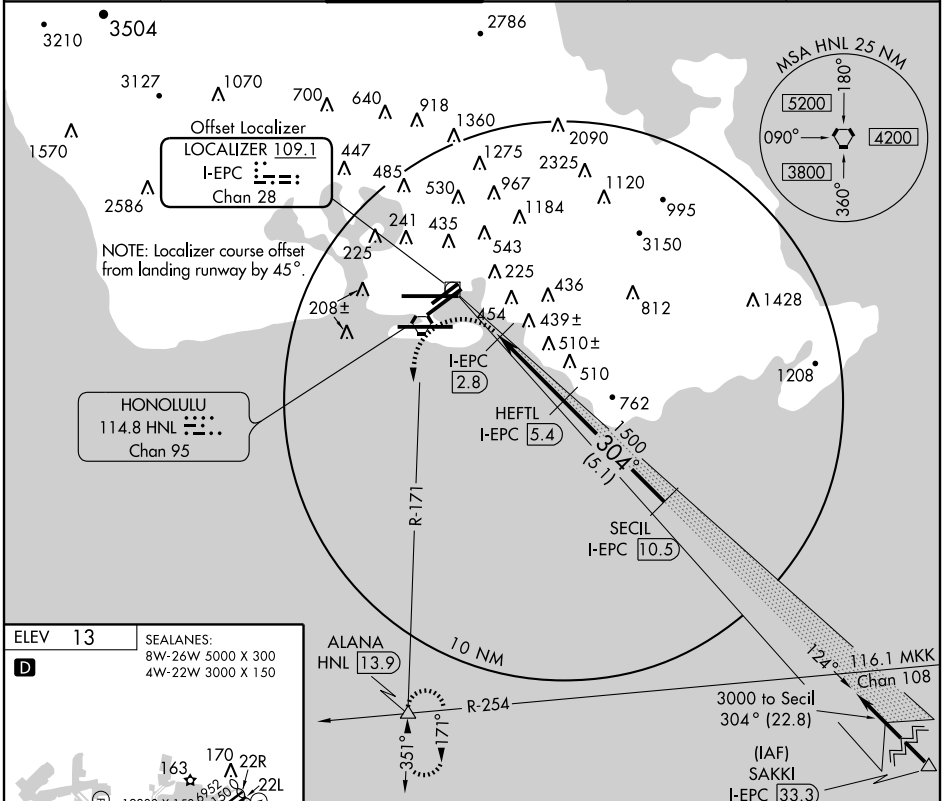
HONOLULU INTL (HNL) (PHNL)

LOC/DME I-EPC <b>109.1</b> Chan 28	APP CRS <b>304°</b>	Rwy Idg <b>12000</b> TDZE <b>10</b> Apt Elev <b>13</b>
--	------------------------	--

▼ Cat. A, B, C circling not authorized northwest of airport between Rwys 8L/26R and 4L/22R. Cat. D, E circling not authorized north of Rwy 8L/26R.  
▲ Inoperative table does not apply to MALSF. Follow flasher lights to Rwy 26L. Procedure not authorized at night when MALSF inoperative.

**MALSF**  
Ⓜ -  $\equiv$  MISSED APPROACH: Climbing left turn to 3000 via HNL R-171 to ALANA Int/HNL 13.9 DME and hold.

ATIS <b>127.9 251.15</b>	HCF APPROACH <b>118.3 269.0</b>	HONOLULU TOWER <b>118.1 257.8</b>	GND CON <b>121.9 348.6</b>	CLNC DEL <b>121.4 281.4</b>	RAMP CONTROL <b>121.8</b>
-----------------------------	------------------------------------	--------------------------------------	-------------------------------	--------------------------------	------------------------------



ELEV 13	SEALANES: 8W-26W 5000 X 300 4W-22W 3000 X 150	ALANA HNL [13.9]	HEFTL I-EPC [5.4]	SECIL I-EPC [10.5]	
<b>D</b>	<p>Use I-EPC DME when on localizer course.</p> <p>3000</p> <p>HNL R-171 114.8</p> <p>I-EPC [2.2]</p> <p>620</p> <p>1500</p> <p>3000</p> <p>Procedure Turn NA</p>				
		1.7 NM	0.6	2.6 NM	5.1 NM
CATEGORY	A	B	C	D	E
S-26L	560-2 550 (600-2)				
CIRCLING	620-2 607 (700-2)		760-2½ 1500-3		747 (800-2½) 1487 (1500-3)

PAC, 22 OCT 2009 to 17 DEC 2009

PAC, 22 OCT 2009 to 17 DEC 2009