

ILS RWY 8L

HONOLULU INTL (HNL) (PHNL)

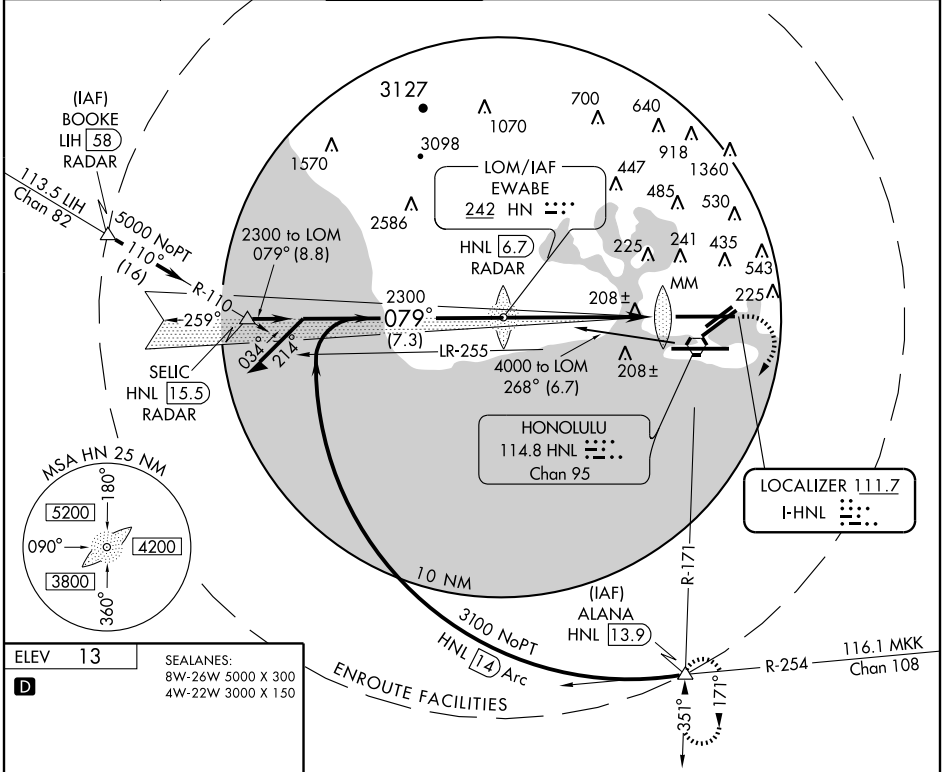
LOC HNL	APP CRS 079°	Rwy Idg 12300
111.7		TDZE 13
		Apt Elev 13

⚠ Cat. A, B, C circling not authorized northwest of airport between Rwy 8L-26R and 4L-22R; Cat. D circling not authorized north of Rwy 8L-26R.



MISSED APPROACH: Climb to 500 then climbing right turn to 3000 via HNL R-171 to ALANA Int/HNL 13.9 DME and hold.

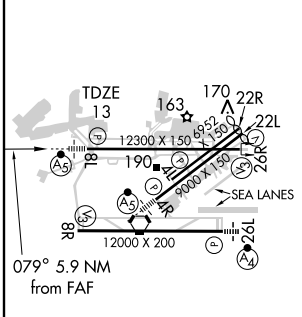
ATIS 127.9 251.15	HCF APPROACH 118.3 269.0	HONOLULU TOWER 118.1 257.8	GND CON 121.9 348.6	CLNC DEL 121.4 281.4	RAMP CONTROL 121.8
-----------------------------	------------------------------------	--------------------------------------	-------------------------------	--------------------------------	------------------------------



PAC, 22 OCT 2009 to 17 DEC 2009

PAC, 22 OCT 2009 to 17 DEC 2009

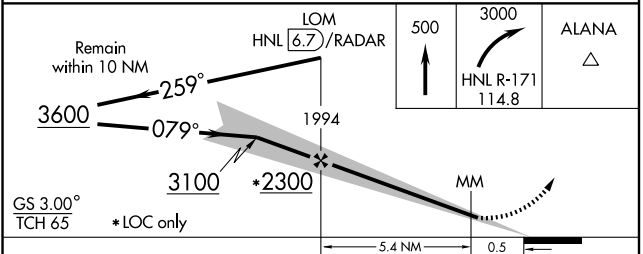
ELEV 13	SEALANES: 8W-26W 5000 X 300 4W-22W 3000 X 150
D	



MIRL Rwy 4L-22R
REIL Rwys 4L, 8R, 22L, 22R and 26R
HIRL Rwys 4R-22L, 8L-26R and 8R-26L

FAF to MAP 5.9 NM

Knots	60	90	120	150	180
Min:Sec	5:54	3:56	2:57	2:22	1:58



CATEGORY	A	B	C	D
S-ILS 8L	213-1/2		200 (200-1/2)	
S-LOC 8L	460-1/2	447 (500-1/2)	460-3/4 447 (500-3/4)	460-1 447 (500-1)
CIRCLING	620-1	607 (700-1)	620-13/4 607 (700-13/4)	760-2-1/2 747 (800-2-1/2)