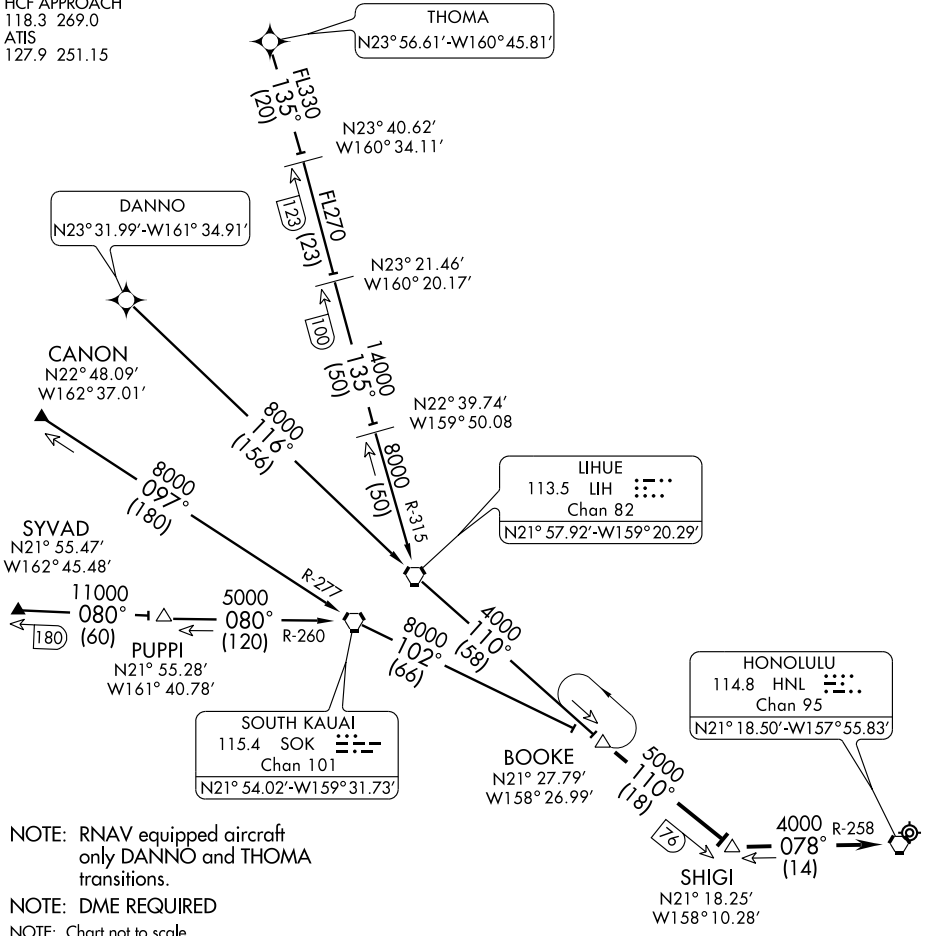


BOOKE EIGHT ARRIVAL (BOOKE.BOOKE8)

HCf APPROACH
118.3 269.0
ATIS
127.9 251.15



PAC, 22 OCT 2009 to 17 DEC 2009

PAC, 22 OCT 2009 to 17 DEC 2009

ARRIVAL DESCRIPTION

CANON TRANSITION (CANON.BOOKE8): From over CANON INT via SOK R-277 to SOK VORTAC. Then via SOK R-102 to BOOKE DME. Thence....

DANNO TRANSITION (DANNO.BOOKE8): From over DANNO WP via RNAV 116° course to LIH VORTAC. Then via LIH R-110 to BOOKE DME. Thence....

SYVAD TRANSITION (SYVAD.BOOKE8): From over SYVAD INT via SOK R-260 to SOK VORTAC. Then via SOK R-102 to BOOKE DME. Thence....

THOMA TRANSITION (THOMA.BOOKE8): From over THOMA WP via RNAV 135° course to LIH 123 DME, then LIH R-315 to LIH VORTAC. Then via LIH R-110 to BOOKE DME. Thence....

....From over BOOKE DME via LIH R-110 and HNL R-258 to HNL VORTAC. Expect radar vectors.

BOOKE EIGHT ARRIVAL (BOOKE.BOOKE8)