

RNAV (GPS) RWY 28

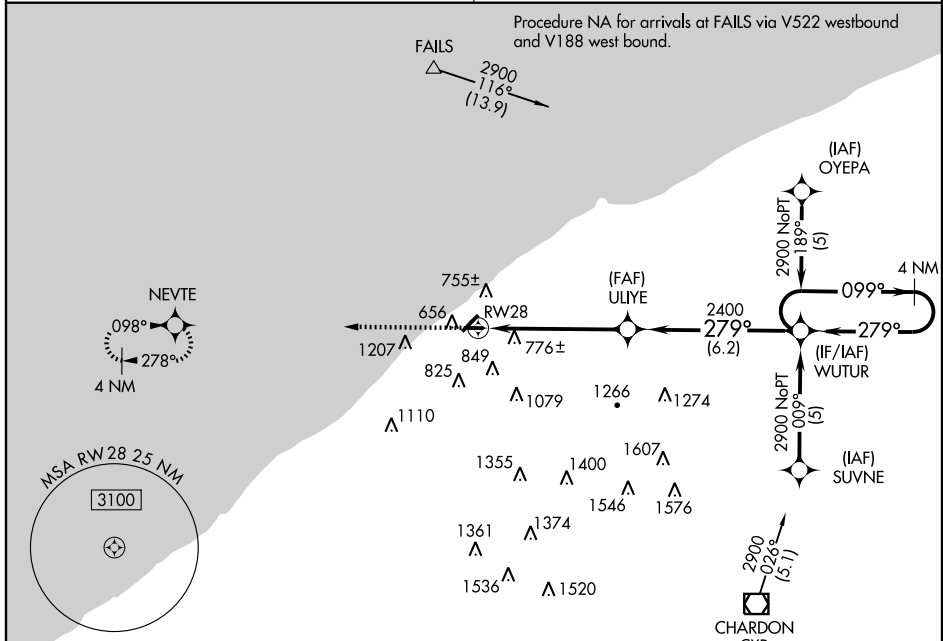
WILLOUGHBY LOST NATION MUNI (LNN)

APP CRS 279°	Rwy Idg 3148
	TDZE 626
	Apt Elev 626

NA DME/DME RNP-0.3 NA. Visibility reduction by helicopters NA. Use Burke Lakefront altimeter setting; when not received, use Cleveland-Hopkins Intl altimeter setting and increase all MDA 40 feet, and all visibilities ¼ mile.

MISSED APPROACH: Climb to 2300 direct NEVTE and hold.

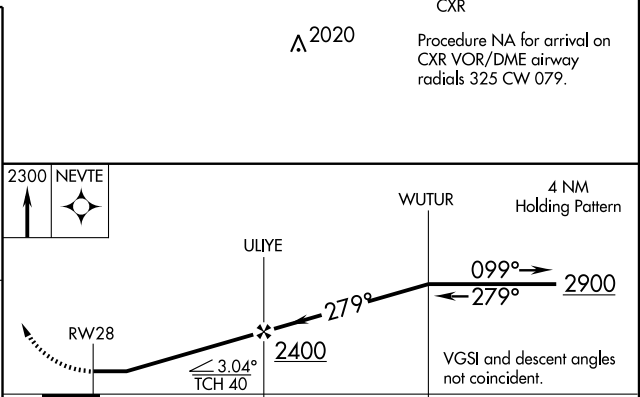
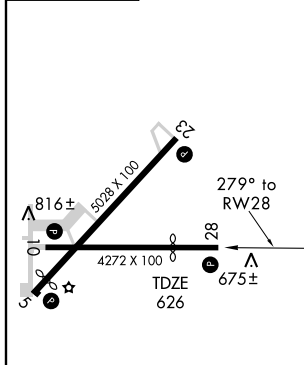
CLEVELAND APP CON 125.35 354.025	UNICOM 122.725 (CTAF) 0
--	-----------------------------------



EC-2, 22 OCT 2009 to 19 NOV 2009

EC-2, 22 OCT 2009 to 19 NOV 2009

ELEV	626
------	-----



CATEGORY	A	B	C	D
LNAV MDA	1260-1	634 (700-1)	1260-1¾ 634 (700-1¾)	NA
CIRCLING	1260-1	634 (700-1)	1260-1¾ 634 (700-1¾)	NA

REIL Rwy 5, 10, 23 and 28 **0**
MIRL Rwy 5-23 and 10-28 **0**