

RNAV (GPS) RWY 23

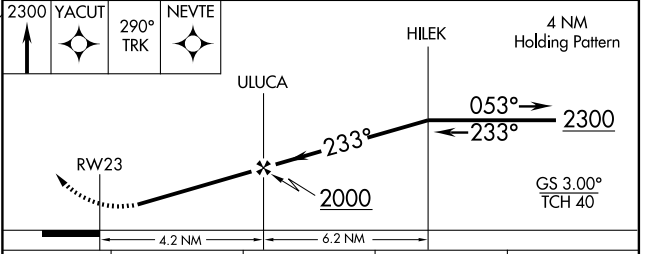
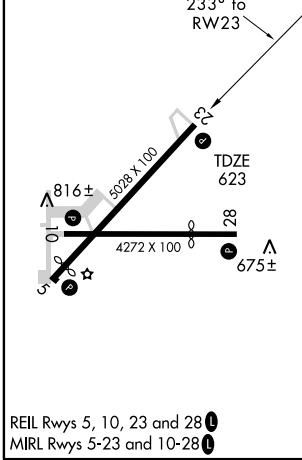
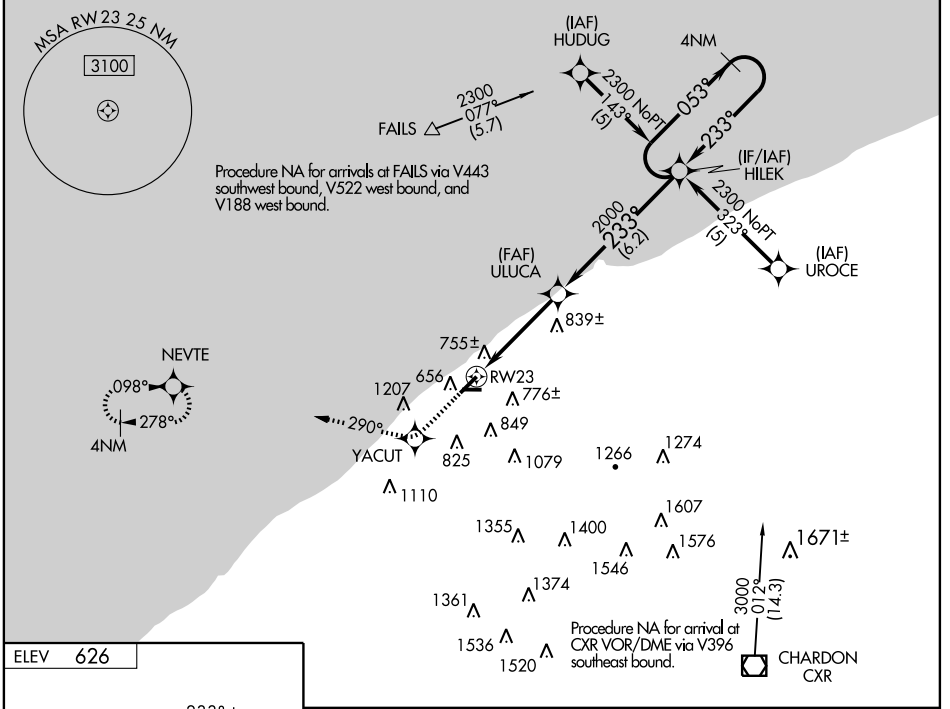
WILLOUGHBY LOST NATION MUNI (LNN)

WAAS CH 82410 W23A	APP CRS 233°	Rwy Idg 5028 TDZE 623 Apt Elev 626
--	------------------------	--

NA Baro-VNAV NA. DME/DME RNP-0.3 NA. Visibility reduction by helicopters NA. MISSED APPROACH: Climb to 2300 direct YACUT and via 290° track to NEVTE and hold.

NA Use Burke Lakefront altimeter setting; when not received, use Cleveland-Hopkins Intl altimeter setting and increase all DA/MDA 40 feet, and all visibilities 1/2 mile.

CLEVELAND APP CON 125.35 354.025	UNICOM 122.725 (CTAF) 0
--	--



CATEGORY	A	B	C	D
LPV DA	1031-1½	408 (500-1½)		NA
LNAV/ VNAV DA	1142-1¾	519 (600-1¾)		NA
LNAV MDA	1200-1	577 (600-1)	1200-1½ 577 (600-1½)	NA
CIRCLING	1200-1	574 (600-1)	1200-1½ 574 (600-1½)	NA

EC-2, 22 OCT 2009 to 19 NOV 2009

EC-2, 22 OCT 2009 to 19 NOV 2009