

# RNAV (GPS) RWY 10

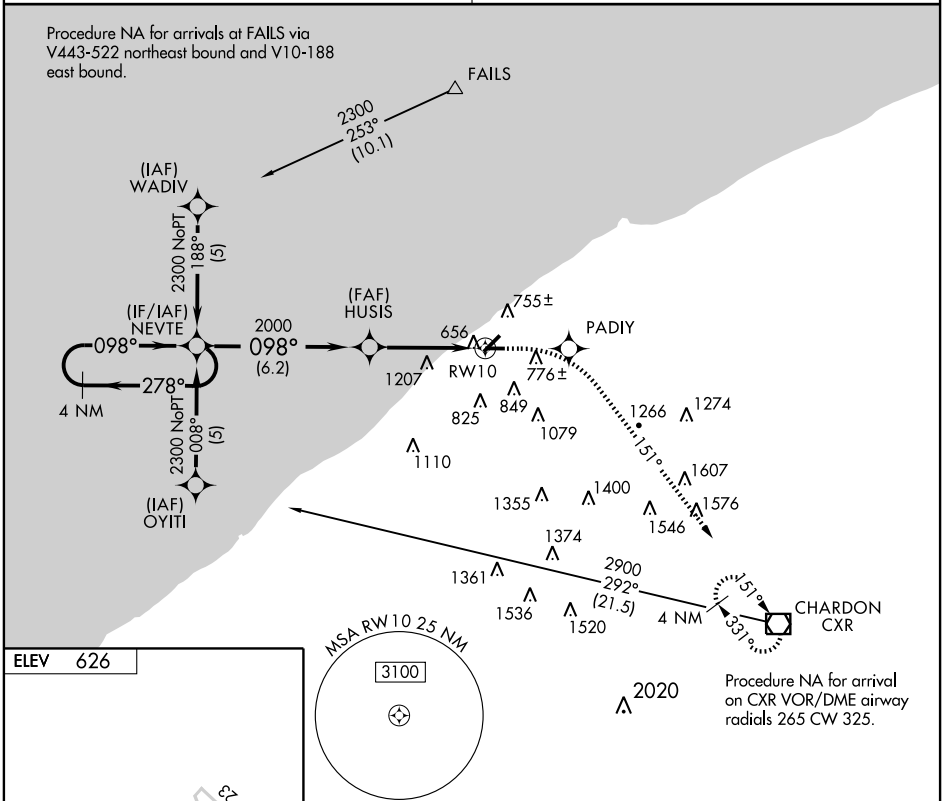
WILLOUGHBY LOST NATION MUNI (LNN)

APP CRS	Rwy Idg	<b>4272</b>
<b>098°</b>	TDZE	<b>625</b>
	Apt Elev	<b>626</b>

**NA** DME/DME RNP-0.3 NA. Visibility reduction by helicopters NA.  
 Use Burke Lakefront altimeter setting; when not received, use Cleveland-Hopkins  
 Intl altimeter setting and increase all MDA 40 feet, and all visibilities ¼ mile.

**MISSED APPROACH:** Climb to 2900  
 direct PADIY and via track 151° to  
 CXR VOR/DME and hold.

CLEVELAND APP CON <b>125.35 354.025</b>	UNICOM <b>122.725 (CTAF) 0</b>
--	-----------------------------------



EC-2, 22 OCT 2009 to 19 NOV 2009

EC-2, 22 OCT 2009 to 19 NOV 2009

ELEV 626

REIL Rwy 5, 10, 23 and 28  
 MRL Rwy 5-23 and 10-28

4 NM Holding Pattern

NEVTE 2300 ← 278° / → 098°

HUSIS 2900 ↑

PADIY 151° track

CXR

VGSI and descent angles not coincident.

2000 3.03° TCH 40

6.2 NM 4.2 NM

CATEGORY	A	B	C	D
RNAV MDA	1560-1¼	935 (1000-1¼)	1560-2¾ 935 (1000-2¾)	NA
CIRCLING	1560-1¼	934 (1000-1¼)	1560-2¾ 934 (1000-2¾)	NA