

RNAV (GPS) RWY 4

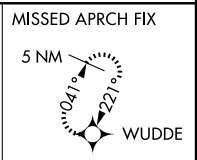
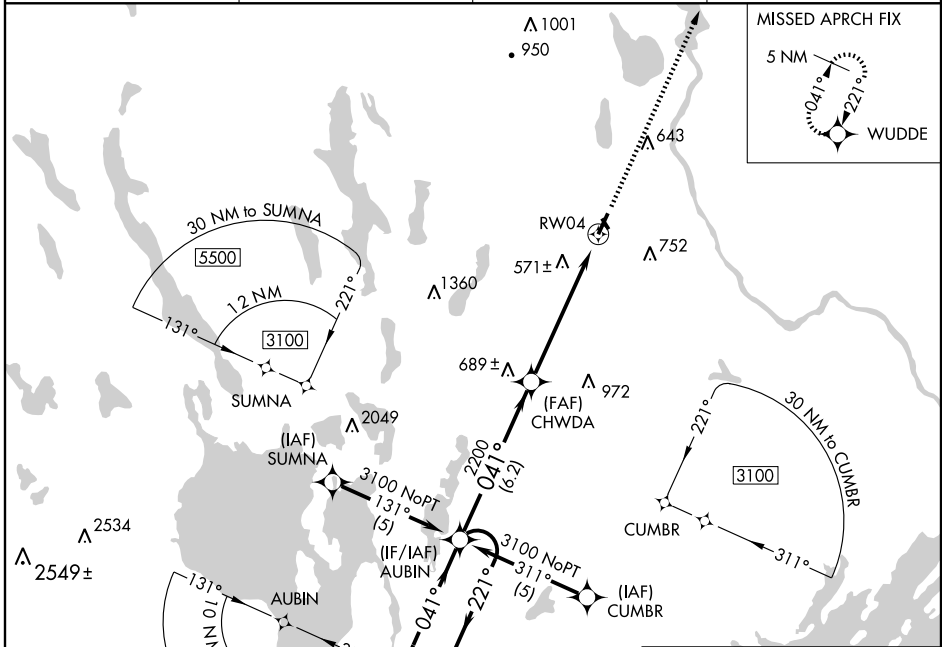
AUBURN-LEWISTON MUNI (LEW)

APP CRS	Rwy Idg	5001
041°	TDZE	270
	Apt Elev	288

V Baro-VNAV NA below -15°C (5°F). DME/DME RNP-0.3 NA.
A For inoperative MALSR, increase LNAV Cats. A and B visibility to 1 mile.
W Circling to Rwy 17, 22, 35 NA at night.

MALSR MISSED APPROACH: Climb to 3100 direct WUDDÉ and hold.

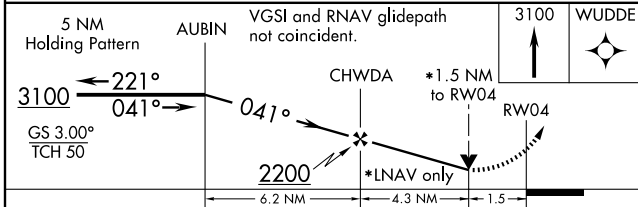
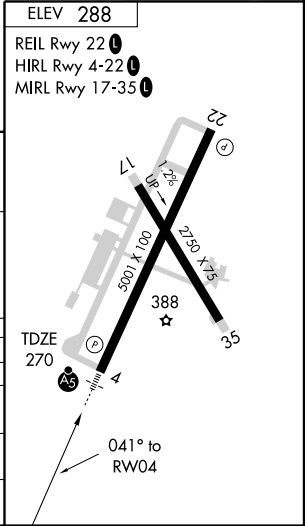
AWOS-3 118.025	PORTLAND APP CON * 125.5	PORTLAND CLNC DEL 124.05	UNICOM 122.8 (CTAF)
--------------------------	------------------------------------	------------------------------------	-------------------------------



NE-1, 22 OCT 2009 to 19 NOV 2009

NE-1, 22 OCT 2009 to 19 NOV 2009

5 NM Holding Pattern	AUBIN	VGSI and RNAV glidepath not coincident.	3100	WUDDÉ



CATEGORY	A	B	C	D
LPV DA	NA			
LNAV/VNAV DA	900-1¼ 630 (700-1¼)			
LNAV MDA	860-¾ 590 (600-¾)	860-1 590 (600-1)	860-1¼ 590 (600-1¼)	
CIRCLING	900-2¼ 612 (700-2¼)	920-2¼ 632 (700-2¼)	1060-2½ 772 (800-2½)	