

RNAV (GPS) RWY 22

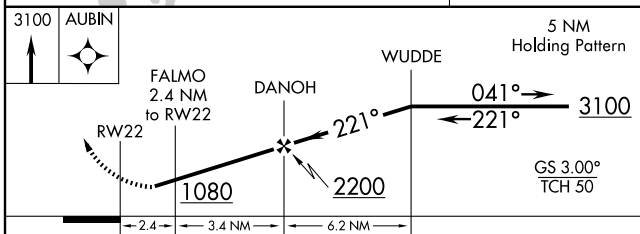
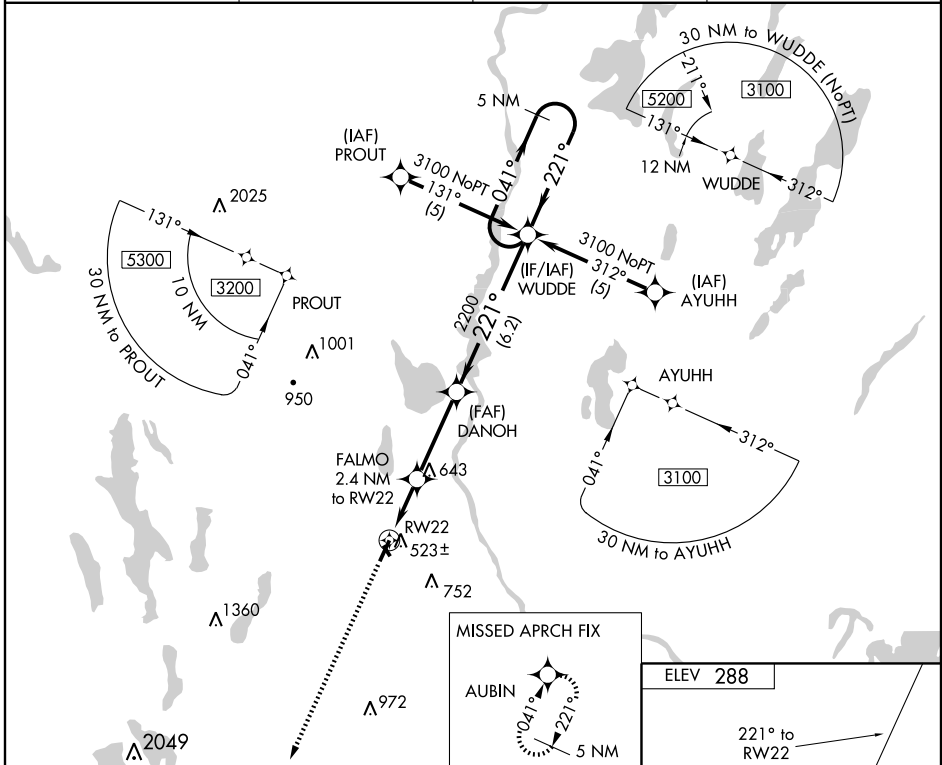
AUBURN-LEWISTON MUNI (LEW)

APP CRS **221°**
 Rwy Idg **5001**
 TDZE **270**
 Apt Elev **288**

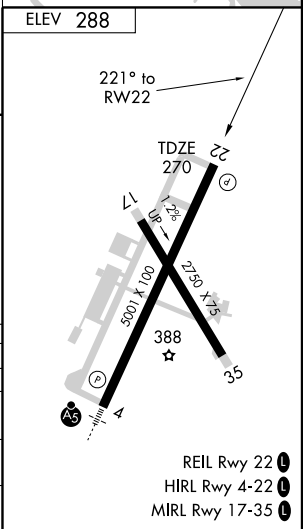
V DME/DME RNP-0.3 NA. Baro-VNAV NA below -15°C (5°F).
A Straight-in minimums NA at night.
W Circling to Rwy 17/35 NA at night.

MISSED APPROACH: Climb to 3100 direct AUBIN and hold.

AWOS-3 **118.025** PORTLAND APP CON ★ **125.5** PORTLAND CLNC DEL **124.05** UNICOM **122.8 (CTAF) 0**



CATEGORY	A		B		C		D	
LPV DA	NA							
LNAV/VNAV DA	860-2		590 (600-2)					
LNAV MDA	780-1	510 (500-1)	780-1½		510 (500-1½)			
CIRCLING	860-2	572 (600-2)	920-2	632 (700-2)	1060-2½		772 (800-2½)	



NE-1, 22 OCT 2009 to 19 NOV 2009

NE-1, 22 OCT 2009 to 19 NOV 2009

REIL Rwy 22 0
 HIRL Rwy 4-22 0
 MIRL Rwy 17-35 0