

GARY, INDIANA

AL-748 (FAA)

APP CRS <b>306°</b>	Rwy ldg <b>7003</b>
	TDZE <b>591</b>
	Apt Elev <b>591</b>

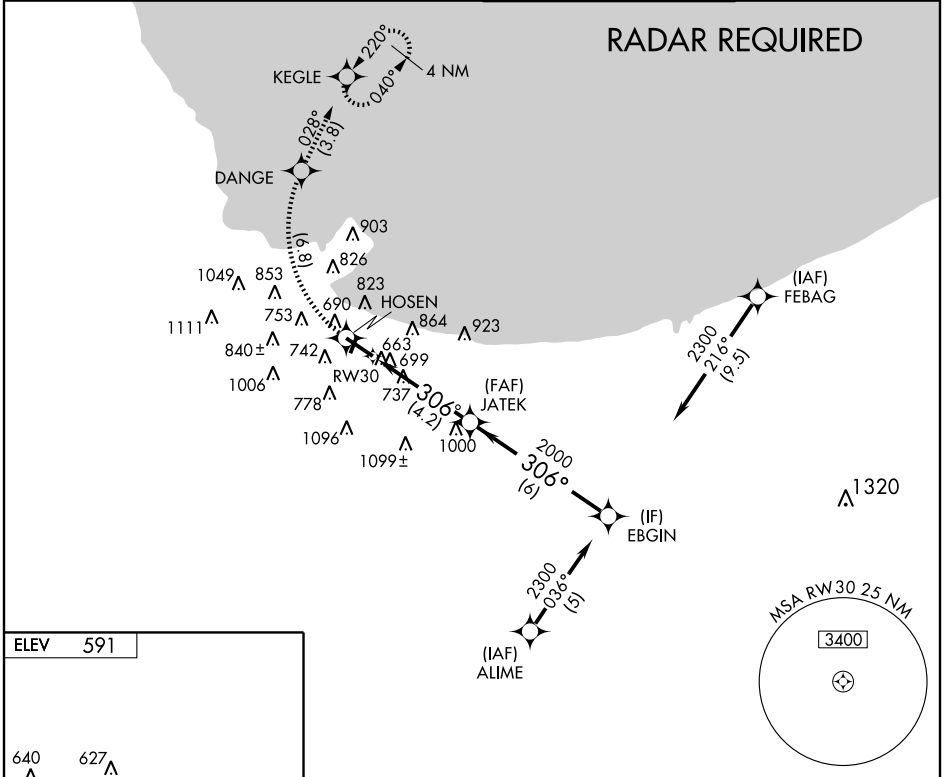
# RNAV (RNP) RWY 30

GARY/CHICAGO INTL (GYY)

**▼** For uncompensated Baro-VNAV systems, procedure NA below -4°C (25°F) or above 47°C (117°F).  
**▲ NA** For inoperative MALSR, increase RNP 0.13 visibility to 1¼ all Cats. RF and GPS REQUIRED.

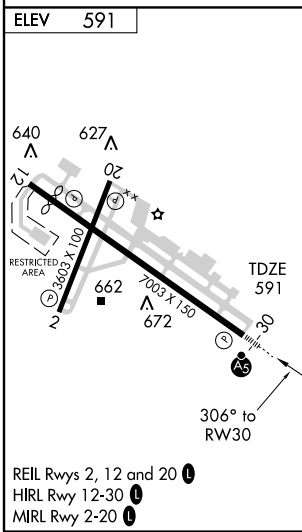
**MALSR** MISSED APPROACH: Climb to 2100 via 306° track to HOSEN, right radius turn to DANGE, 028° track to KEGLE and hold.

ATIS <b>120.625</b>	CHICAGO APP CON <b>133.1 285.6</b>	GARY TOWER ★ <b>125.6 (CTAF) 0</b>	GND CON <b>121.9</b>
------------------------	---------------------------------------	---------------------------------------	-------------------------



EC-2, 22 OCT 2009 to 19 NOV 2009

EC-2, 22 OCT 2009 to 19 NOV 2009



2100	HOSEN	DANGE	KEGLE	EBGIN
TRK 306°				
# TCH: 641 MSL	JATEK			
	2000	2000	2300	
	4.2 NM		6 NM	
RW30	306°			
				GS 3.00° TCH 50 #
CATEGORY	A	B	C	D
RNP 0.13 DA	936-¾		345 (400-¾)	

GARY, INDIANA  
 REIL Rws 2, 12 and 20 **0**  
 HIRL Rwy 12-30 **0**  
 MIRL Rwy 2-20 **0**

41°37'N - 87°25'W

## GARY/CHICAGO INTL (GYY) RNAV (RNP) RWY 30

**SPECIAL AIRCRAFT & AIRCREW  
 AUTHORIZATION REQUIRED**