

GARY, INDIANA

AL-748 (FAA)

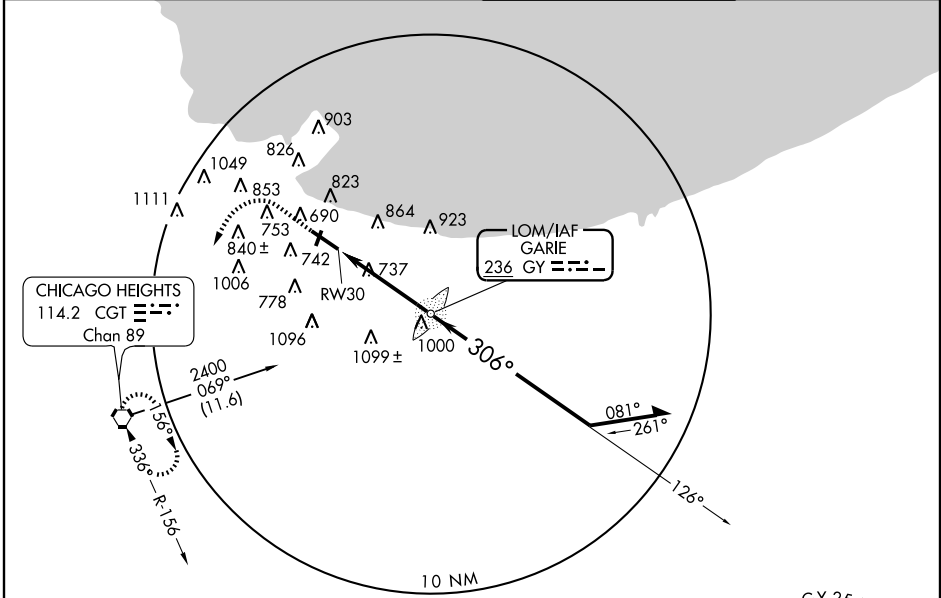
# NDB or GPS RWY 30

GARY/CHICAGO INTL (GYY)

LOM GY <b>236</b>	APP CRS <b>306°</b>	Rwy Idg <b>7003</b>
		TDZE <b>592</b>
		Apt Elev <b>592</b>

	MALSR 	MISSED APPROACH: Climb to 1500, then climbing left turn to 2400 direct CGT VORTAC and hold.
--	-----------	---

ATIS <b>120.625</b>	CHICAGO APP CON <b>133.1 285.6</b>	GARY TOWER ★ <b>125.6 (CTAF) 0</b>	GND CON <b>121.9</b>
------------------------	---------------------------------------	---------------------------------------	-------------------------



EC-2, 22 OCT 2009 to 19 NOV 2009

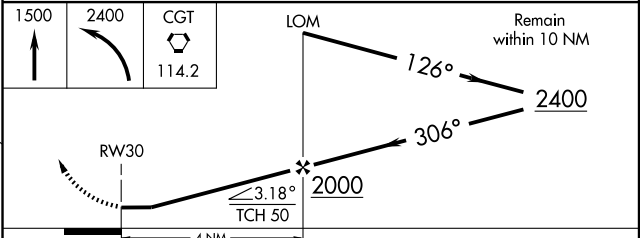
EC-2, 22 OCT 2009 to 19 NOV 2009

ELEV 592

REIL Rwy 2, 12 and 20  
HIRL Rwy 12-30  
MIRL Rwy 2-20

FAF to MAP 4 NM

Knots	60	90	120	150	180
Min:Sec	4:00	2:40	2:00	1:36	1:20



CATEGORY	A	B	C	D
S-30	1180-¾ 588 (600-¾)		1180-1 588 (600-1)	1180-1½ 588 (600-1½)
CIRCLING	1180-1 588 (600-1)		1180-1½ 588 (600-1½)	1180-2 588 (600-2)

GARY, INDIANA  
Amdt 7B 08325

41°37'N - 87°25'W

# GARY/CHICAGO INTL (GYY)

## NDB or GPS RWY 30