

GARY, INDIANA

AL-748 (FAA)

COPTER ILS RWY 30

GARY/CHICAGO INTL (GYY)

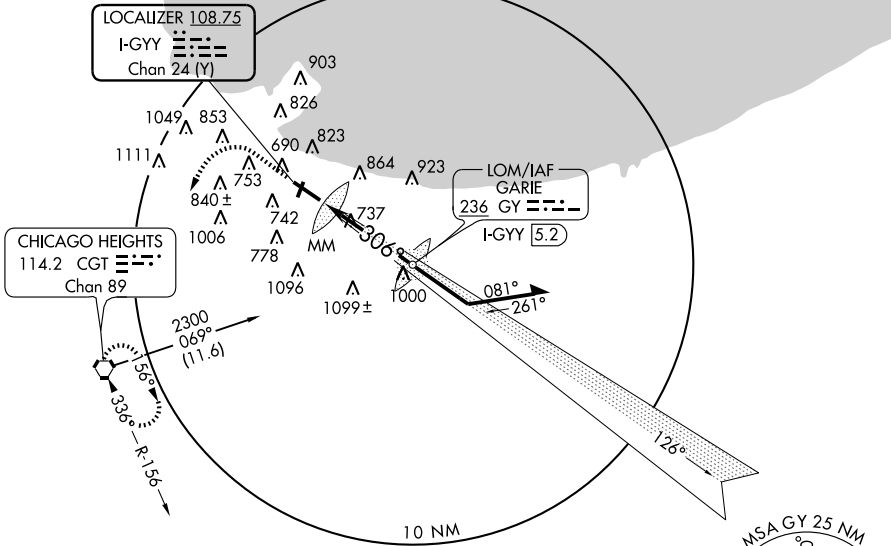
LOC I-GYY 108.75	APP CRS 306°	Rwy Idg TDZE Apt Elev	7003 592 592
Chan 24 (Y)			



MISSED APPROACH: Climb to 1500 then climbing left turn to 2300 direct CGT VORTAC and hold.

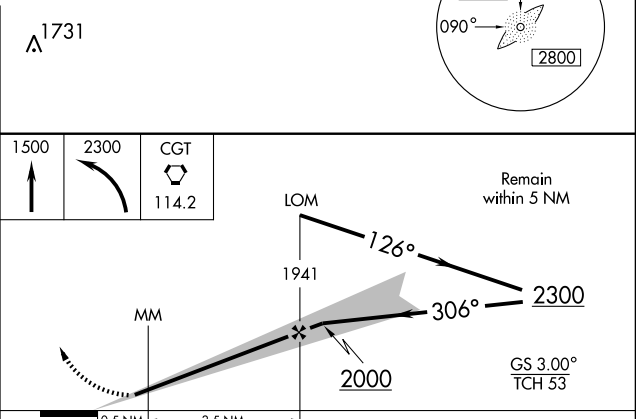
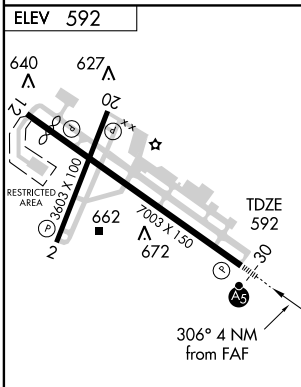
ATIS 120.625	CHICAGO APP CON 133.1 285.6	GARY TOWER ★ 125.6 (CTAF) 0	GND CON 121.9
------------------------	---------------------------------------	---------------------------------------	-------------------------

ADF or RADAR REQUIRED



EC-2, 22 OCT 2009 to 19 NOV 2009

EC-2, 22 OCT 2009 to 19 NOV 2009



REIL Rwy 2, 12 and 20
HIRL Rwy 12-30
MIRL Rwy 2-20

FAF to MAP 4 NM

Knots	45	60	75	90	105
Min:Sec	5:20	4:00	3:12	2:40	2:17

CATEGORY	COPTER	
S-ILS 30	792-¼	200 (200-¼)
S-LOC 30	1000-¼	408 (500-¼)
CIRCLING	NA	

GARY, INDIANA
Orig 09239

41°37'N - 87°25'W

GARY/CHICAGO INTL (GYY) COPTER ILS RWY 30