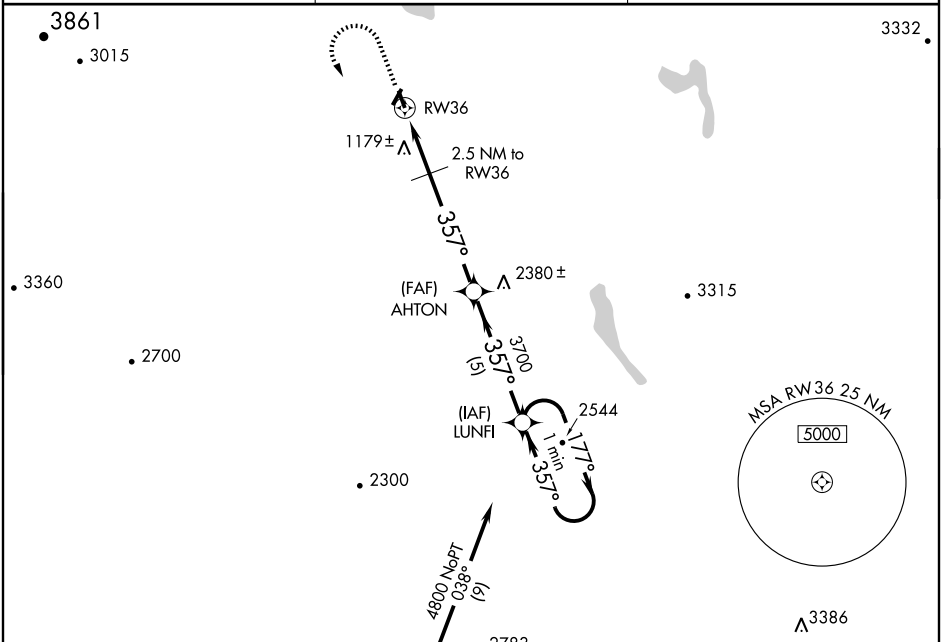


GPS RWY 36
NEWPORT STATE (EFK)

APP CRS 357°	Rwy Idg 4000
	TDZE 926
	Apt Elev 930

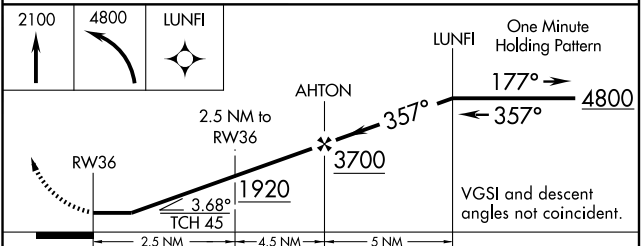
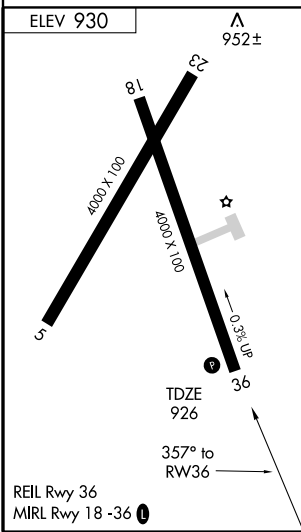
▼ Obtain local altimeter setting on CTAF, when not received, use Morrisville-Stowe State altimeter setting.
 MISSED APPROACH: Climb to 2100, then climbing left turn to 4800 direct LUNFI WP and hold.

AWOS-3 118.275	BURLINGTON RADIO 122.5 255.4	UNICOM 122.8 (CTAF) 📻
--------------------------	--	--



NE-1, 22 OCT 2009 to 19 NOV 2009

NE-1, 22 OCT 2009 to 19 NOV 2009



CATEGORY	A	B	C	D
S-36	1440-1	514 (600-1)	1440-1½ 514 (600-1½)	NA
CIRCLING	1460-1	530 (600-1)	1560-1¾ 630 (700-1¾)	NA
MORRISVILLE-STOWE STATE ALTIMETER SETTING MINIMUMS				
S-36	1520-1	594 (600-1)	1520-1½ 594 (600-1½)	NA
CIRCLING	1560-1	630 (700-1)	1660-2 730 (800-2)	NA