

ATLANTA, GEORGIA

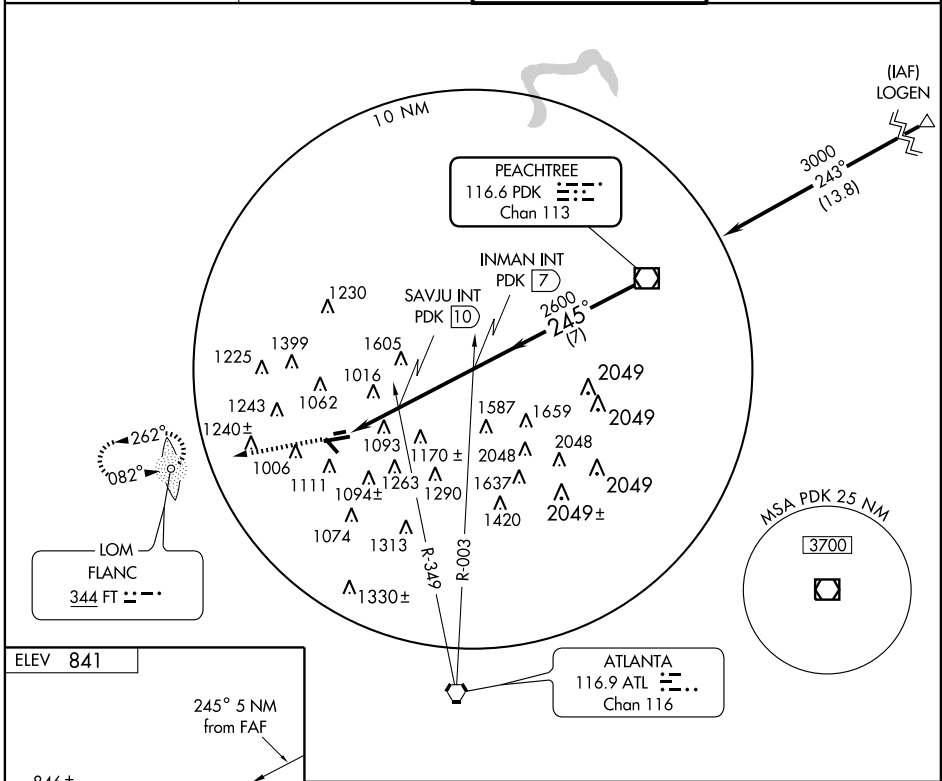
AL-745 (FAA)

VOR/DME PDK 116.6 Chan 113	APP CRS 245°	Rwy Idg TDZE Apt Elev 841	N/A N/A 841
--	------------------------	---	--

VOR-A
ATLANTA/ FULTON COUNTY AIRPORT-BROWN FIELD (F^TY)

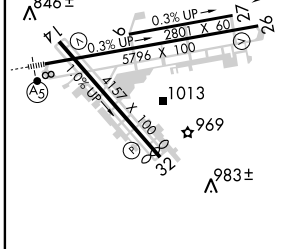
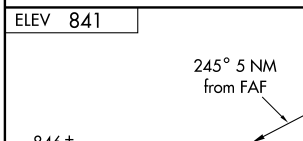
ADF or RADAR REQUIRED	MISSED APPROACH: Climb to 3000 direct FLANC LOM and hold.
------------------------------	---

ATIS 120.175	ATLANTA APP CON 121.0 268.7	COUNTY TOWER 118.45 257.8	GND CON 121.7 348.6
------------------------	---------------------------------------	-------------------------------------	-------------------------------



SE-4, 22 OCT 2009 to 19 NOV 2009

SE-4, 22 OCT 2009 to 19 NOV 2009



ELEV 841	245° 5 NM from FAF				
HIRL Rwy 8-26	MIRL Rwy 14-32	FAF to MAP 5 NM			
MIRL Rwy 14-32					
REIL Rwy 14 and 26					
Knots	60	90	120	150	180
Min:Sec	5:00	3:20	2:30	2:00	1:40

3000 FT	INMAN INT PDK 7			
344	SAVJU INT PDK 10			
	SAVJU FIX PDK 12			
	245°			
	3000			
	Procedure Turn NA			
	2 NM			
	3 NM			
	7 NM			

CATEGORY	A		B		C		D	
CIRCLING	1880-1¼ 1039 (1100-1¼)		1880-1½ 1039 (1100-1½)		1880-3		1039 (1100-3)	
SAVJU FIX MINIMUMS								
CIRCLING	1460-1		619 (700-1)		1520-2 679 (700-2)		1580-2¼ 739 (800-2¼)	

ATLANTA, GEORGIA
Orig 09239

ATLANTA/ FULTON COUNTY AIRPORT-BROWN FIELD (F^TY)
33° 47'N-84° 31'W

VOR-A