

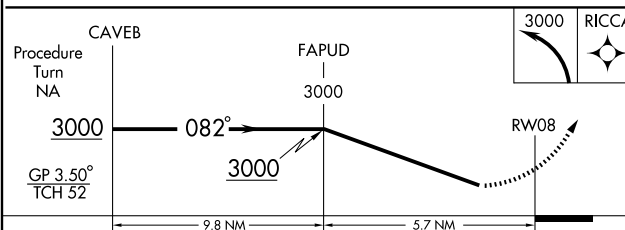
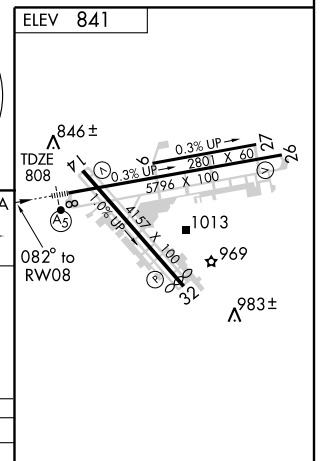
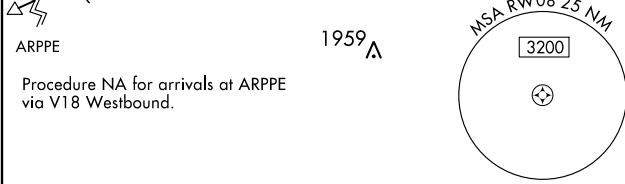
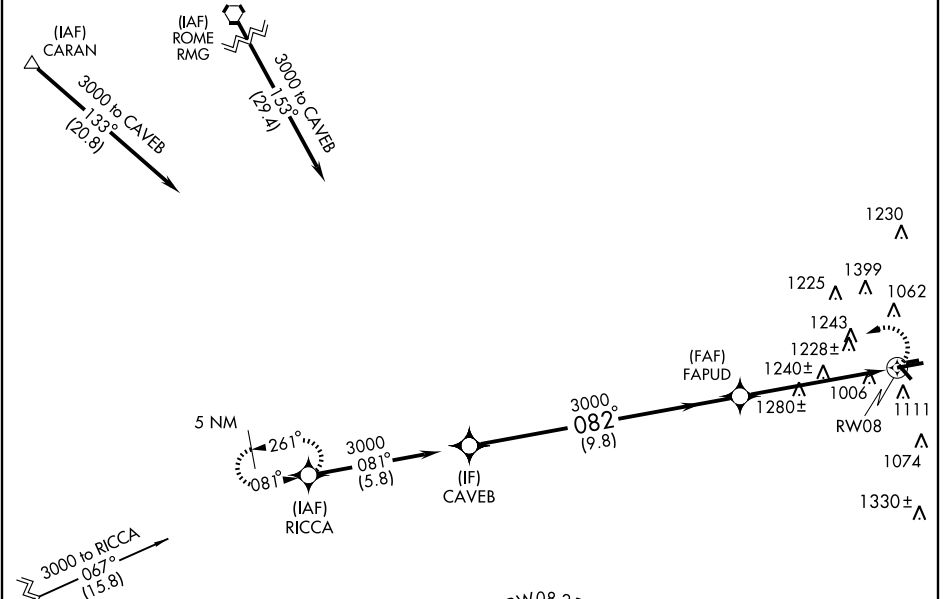
RNAV (RNP) Z RWY 8

ATLANTA/ FULTON COUNTY AIRPORT-BROWN FIELD (F'TY)

APP CRS	Rwy ldg	5796
082°	TDZE	808
	Apt Elev	841

<p>GPS required. Visibility reduction by helicopters NA. For uncompensated Baro-VNAV systems, procedure NA below -9°C (16°F) or above 45°C (114°F). For inoperative MALSR, increase RNP 0.30 visibility to 2¼. Procedure NA for wingspans greater than 136 feet.</p>	<p>MALSR</p>	<p>MISSED APPROACH: Climbing left turn to 3000 direct RICCA and hold.</p>
---	---------------------	--

ATIS 120.175	ATLANTA APP CON 121.0 268.7	COUNTY TOWER 118.45 257.8	GND CON 121.7 348.6
------------------------	---------------------------------------	-------------------------------------	-------------------------------



CATEGORY	A	B	C	D
RNP 0.30 DA	1534-1¾	726 (700-1¾)		NA

SPECIAL AIRCRAFT & AIRCREW AUTHORIZATION REQUIRED

HIRL Rwy 8-26
MIRL Rwy 14-32
REIL Rws 14 and 26

SE-4, 22 OCT 2009 to 19 NOV 2009

SE-4, 22 OCT 2009 to 19 NOV 2009

RNAV (RNP) Z RWY 8