

ATLANTA, GEORGIA

AL-745 (FAA)

APP CRS	Rwy Idg	5796
262°	TDZE	814
	Apt Elev	841

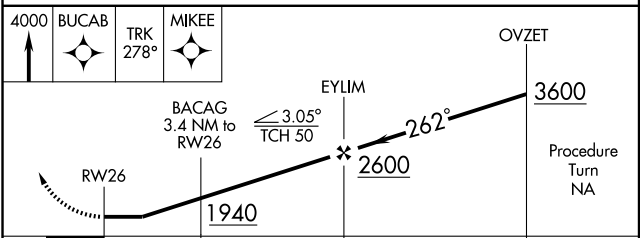
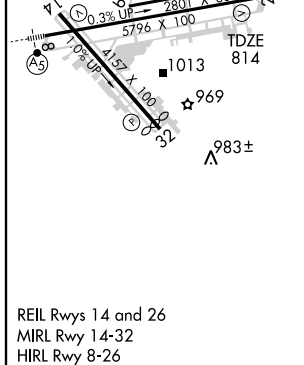
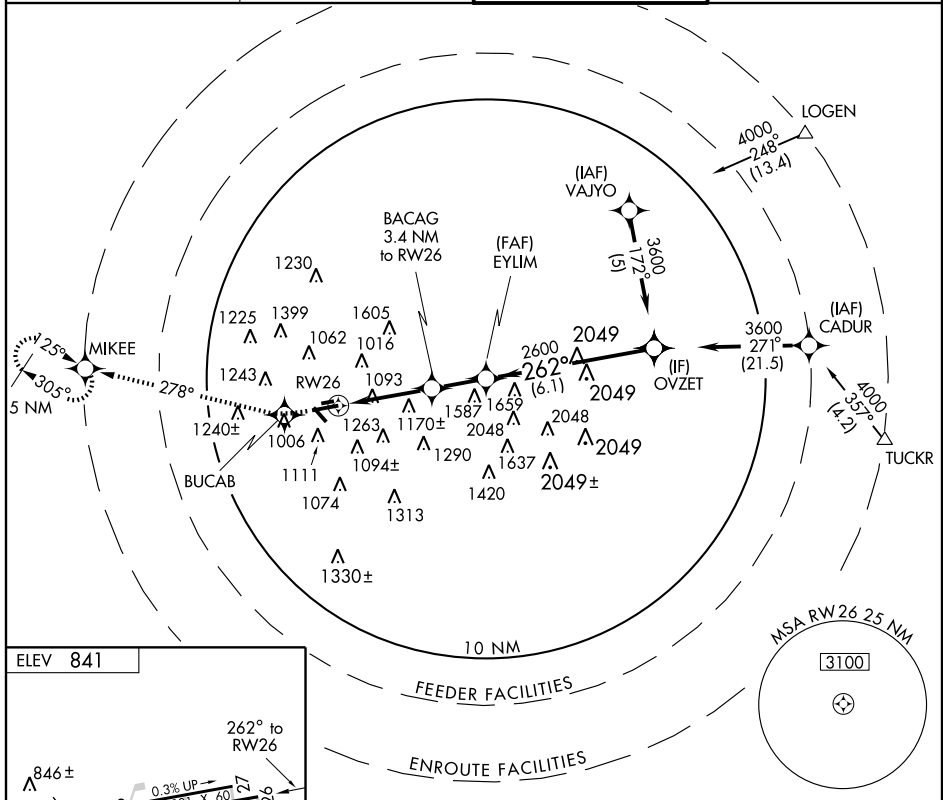
RNAV (GPS) RWY 26

ATLANTA/ FULTON COUNTY AIRPORT-BROWN FIELD (F'Y)

⚠ If local altimeter setting not received, use Hartsfield Jackson Atlanta Intl altimeter setting and increase all MDAs 60 feet.
⚠ DME/DME RNP-0.3 NA. Visibility reduction by helicopters NA.

MISSED APPROACH: Climb to 4000 direct BUCAB and via 278° track to MIKEE and hold.

ATIS 120.175	ATLANTA APP CON 121.0 268.7	COUNTY TOWER 118.45 257.8	GND CON 121.7 348.6
------------------------	---------------------------------------	-------------------------------------	-------------------------------



CATEGORY	A	B	C	D
LNAV MDA	1480-1	666 (700-1)	1480-1¾ 666 (700-1¾)	1480-2 666 (700-2)
CIRCLING	1480-1	639 (700-1)	1480-1¾ 639 (700-1¾)	1580-2¼ 739 (800-2¼)

ATLANTA, GEORGIA
Orig 09239

ATLANTA/ FULTON COUNTY AIRPORT-BROWN FIELD (F'Y)
33° 47'N-84° 31'W

RNAV (GPS) RWY 26

SE-4, 22 OCT 2009 to 19 NOV 2009

SE-4, 22 OCT 2009 to 19 NOV 2009