


# ILS RWY 8

ATLANTA/ FULTON COUNTY AIRPORT-BROWN FIELD (F'TY)

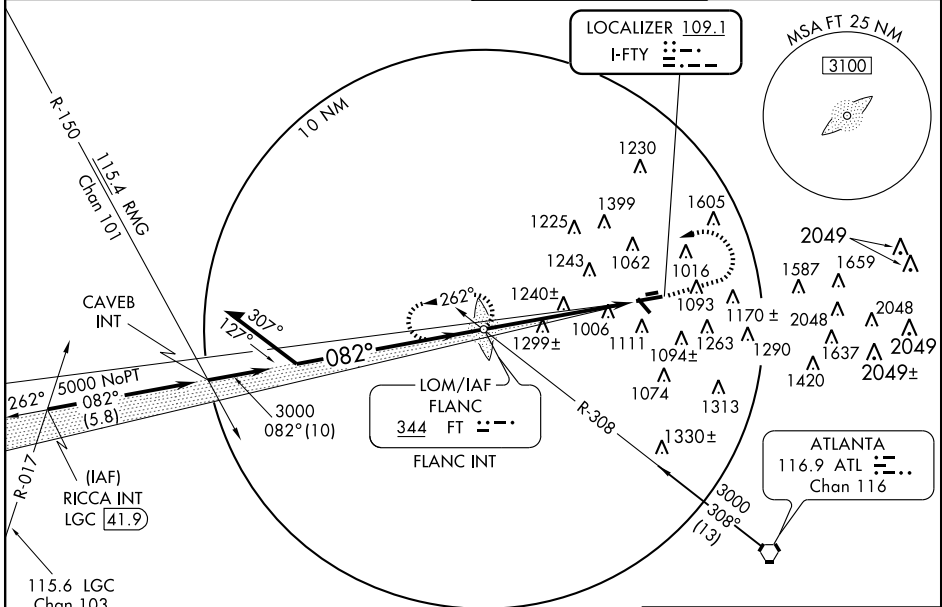
LOC I-FTY <b>109.1</b>	APP CRS <b>082°</b>	Rwy Idg TDZE Apt Elev	<b>5796</b> <b>808</b> <b>841</b>
---------------------------	------------------------	-----------------------------	---

For inoperative MALSR, increase S-LOC 8 Cat A visibility to 1 mile.  
**ADF REQUIRED**  
**NOTE:** Ridge with trees, to 1299 feet MSL between outer marker and runway threshold may be obscured by clouds even with airfield ceiling at or above procedure minimums.

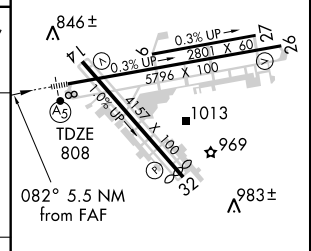
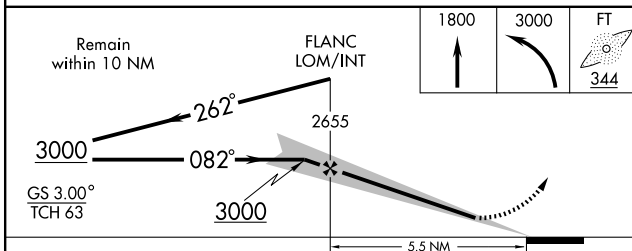
MALSR  


MISSED APPROACH: Climb to 1800 then climbing left turn to 3000 direct FLANC LOM/Int and hold.

ATIS <b>120.175</b>	ATLANTA APP CON <b>121.0 268.7</b>	COUNTY TOWER <b>118.45 257.8</b>	GND CON <b>121.7 348.6</b>
------------------------	---------------------------------------	-------------------------------------	-------------------------------



ELEV 841
----------



CATEGORY	A	B	C	D
S-ILS 8	1078-3/4 270 (300-3/4)			
S-LOC 8	1560-3/4 752 (800-3/4)	1560-1 752 (800-1 3/4)	1560-2 752 (800-2)	1580-2 752 (800-2)
CIRCLING	1560-1 719 (800-1)	1560-1 1/4 719 (800-1 1/4)	1560-2 1/4 719 (800-2 1/4)	1580-2 1/2 739 (800-2 1/2)

HIRL Rwy 8-26  
MIRL Rwy 14-32  
REIL Rws 14 and 26

FAF to MAP 5.5 NM

Knots	60	90	120	150	180
Min:Sec	5:30	3:40	2:45	2:12	1:50

# ILS RWY 8

SE-4, 22 OCT 2009 to 19 NOV 2009

SE-4, 22 OCT 2009 to 19 NOV 2009