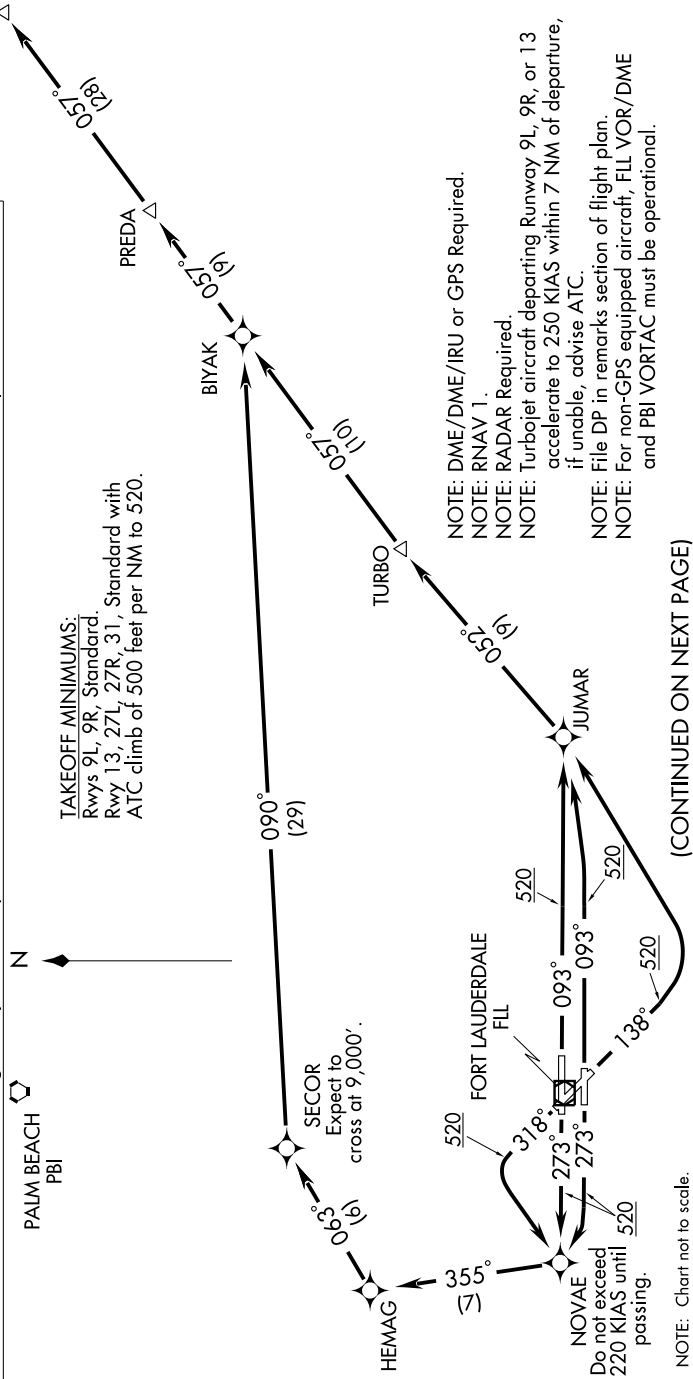


ZAPPA ONE DEPARTURE (RNAV)

SE-3, 22 OCT 2009 to 19 NOV 2009

DEPARTURE ROUTE DESCRIPTION

- TAKEOFF RWY 9L:** Climb heading 093° to 520, then direct JUMAR, then via depicted route, thence....
- TAKEOFF RWY 9R:** Climb heading 093° to 520, then left turn direct JUMAR, then via depicted route, thence....
- TAKEOFF RWY 13:** Climb heading 138° to 520, then left turn direct JUMAR, then via depicted route, thence....
- TAKEOFF RWY 27L:** Climb heading 273° to 520, then right turn direct NOVAE, then via depicted route, thence....
- TAKEOFF RWY 27R:** Climb heading 273° to 520, then direct NOVAE, then via depicted route, thence....
- TAKEOFF RWY 31:** Climb heading 318° to 520, then left turn direct NOVAE, then right turn via 355° track to HEMAG, then depicted route, thence....
-Maintain 3000' or as assigned by ATC. Expect clearance to filed altitude 10 minutes after departure.



TAKEOFF MINIMUMS:
 Rwy 9L, 9R, Standard.
 Rwy 13, 27L, 27R, 31, Standard with
 ATC climb of 500 feet per NM to 520.

- NOTE: DME/DME/IRU or GPS Required.
- NOTE: RNAV 1.
- NOTE: RADAR Required.
- NOTE: Turbojet aircraft departing Runway 9L, 9R, or 13 accelerate to 250 KIAS within 7 NM of departure, if unable, advise ATC.
- NOTE: File DP in remarks section of flight plan.
- NOTE: For non-GPS equipped aircraft, FLL VOR/DME and PBI VORTAC must be operational.

(CONTINUED ON NEXT PAGE)

NOTE: Chart not to scale.

ZAPPA ONE DEPARTURE (RNAV)

SE-3, 22 OCT 2009 to 19 NOV 2009