

FORT LAUDERDALE, FLORIDA

AL-744 (FAA)

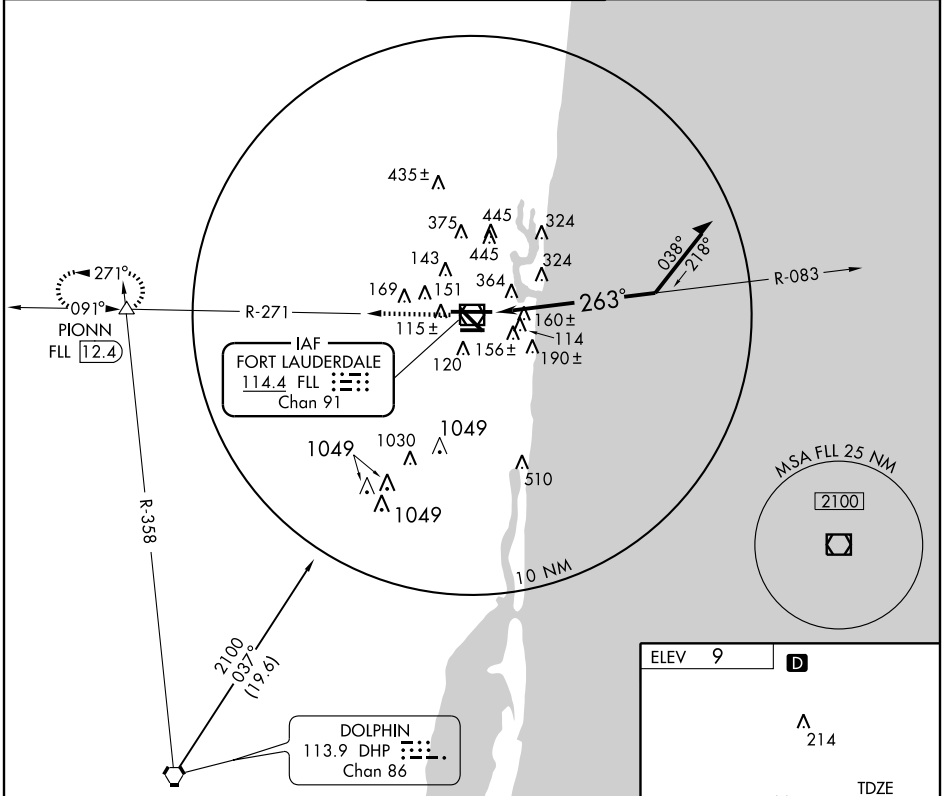
VOR/DME FLL 114.4 Chan 91	APP CRS 263°	Rwy Idg 8394 TDZE 7 Apt Elev 9
---	------------------------	---

VOR RWY 27R

FORT LAUDERDALE-HOLLYWOOD INTL (FLL)

<p>For inoperative MALSR, increase Cats. A and B visibility to RVR 5000.</p>	<p>MALSR</p>	<p>MISSED APPROACH: Climb to 4000 via FLL R-271 to PIONN Int/FLL 12.4 DME and hold, continue climb-in hold to 4000.</p>
--	--------------	---

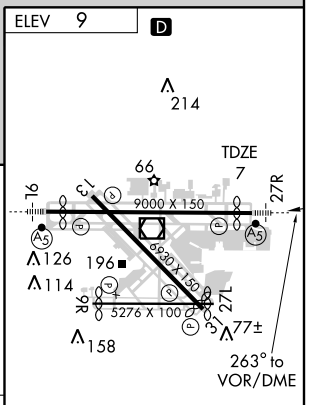
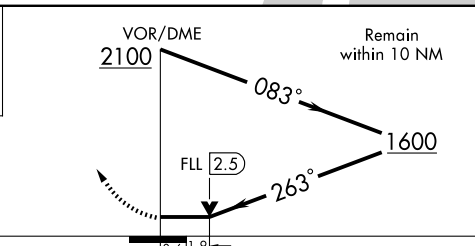
ATIS 135.0	MIAMI APP CON 133.775 285.6	FORT LAUDERDALE TOWER 119.3 257.8	GND CON 121.4	CLNC DEL 128.4
----------------------	---------------------------------------	--	-------------------------	--------------------------



SE-3, 22 OCT 2009 to 19 NOV 2009

SE-3, 22 OCT 2009 to 19 NOV 2009

4000 ↑ FLL R-271 114.4	PIONN △
---------------------------------	------------



CATEGORY	A	B	C	D
S-27R	680/40	673 (700-¾)	680-1½ 673 (700-1½)	680-1¾ 673 (700-1¾)
CIRCLING	680-1	671 (700-1)	680-2 671 (700-2)	700-2¼ 691 (700-2¼)

REIL Rwy 9R, 13 and 31
HIRL Rwy 9L-27R
MIRL Rwy 9R-27L and 13-31

FORT LAUDERDALE, FLORIDA
Amdt 12 09183

FORT LAUDERDALE-HOLLYWOOD INTL (FLL)
26° 04' N-80° 09' W
VOR RWY 27R