

THNDR ONE DEPARTURE (RNAV)

ATIS 135.0
CLNC DEL 128.4
GND CON 121.4
TOWER 119.3 257.8
DEP CON 126.05

TAKEOFF MINIMUMS:

Rwys 9L, 9R, 27L, 27R, Standard.
Rwy 13, 31, Standard with ATC climb of 500 feet per NM to 520.

NOTE: DME/DME/IRU or GPS Required.

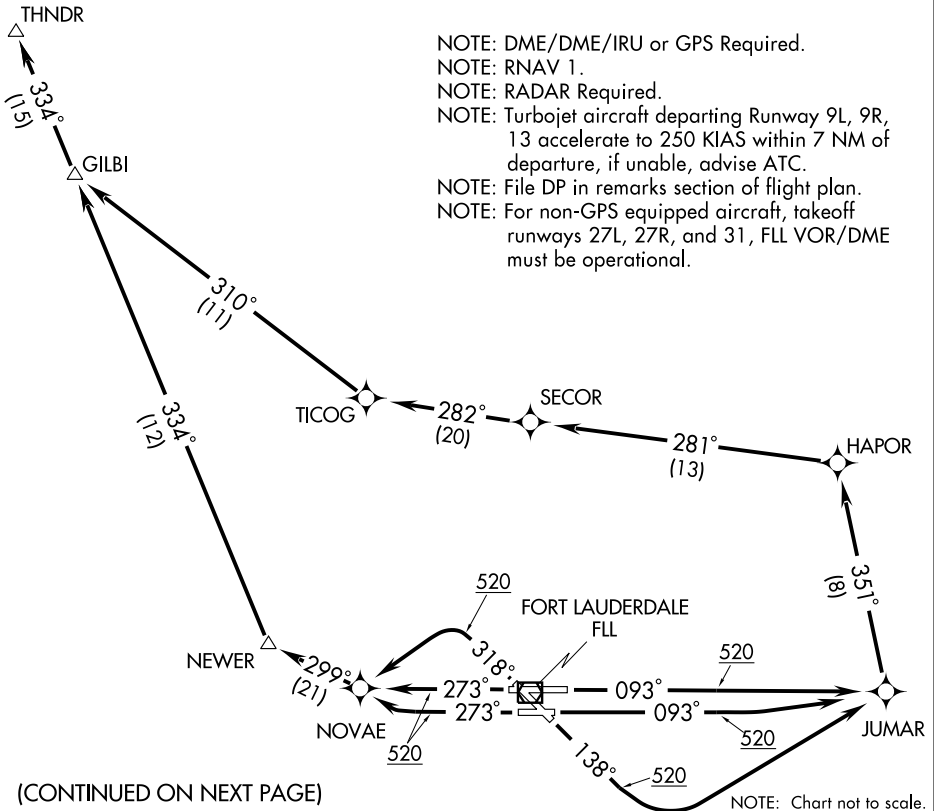
NOTE: RNAV 1.

NOTE: RADAR Required.

NOTE: Turbojet aircraft departing Runway 9L, 9R, 13 accelerate to 250 KIAS within 7 NM of departure, if unable, advise ATC.

NOTE: File DP in remarks section of flight plan.

NOTE: For non-GPS equipped aircraft, takeoff runways 27L, 27R, and 31, FLL VOR/DME must be operational.



(CONTINUED ON NEXT PAGE)

DEPARTURE ROUTE DESCRIPTION

TAKEOFF RWY 9L: Climb heading 093° to 520, then direct JUMAR, then left turn via 351° track to HAPOR, then via depicted route, thence....

TAKEOFF RWY 9R: Climb heading 093° to 520, then left turn direct JUMAR, then left turn via 351° track to HAPOR, then via depicted route, thence....

TAKEOFF RWY 13: Climb heading 138° to 520, then left turn direct JUMAR, then left turn via 351° track to HAPOR, then via depicted route, thence....

TAKEOFF RWY 27L: Climb heading 273° to 520, then right turn direct NOVAE, then via depicted route, thence....

TAKEOFF RWY 27R: Climb heading 273° to 520, then direct NOVAE, then via depicted route, thence....

TAKEOFF RWY 31: Climb heading 318° to 520, then left turn direct NOVAE, then via depicted route, thence....

....Maintain 3000' or as assigned by ATC. Expect clearance to filed altitude 10 minutes after departure.

SE-3, 22 OCT 2009 to 19 NOV 2009

SE-3, 22 OCT 2009 to 19 NOV 2009