

RNAV (GPS) Y RWY 9R

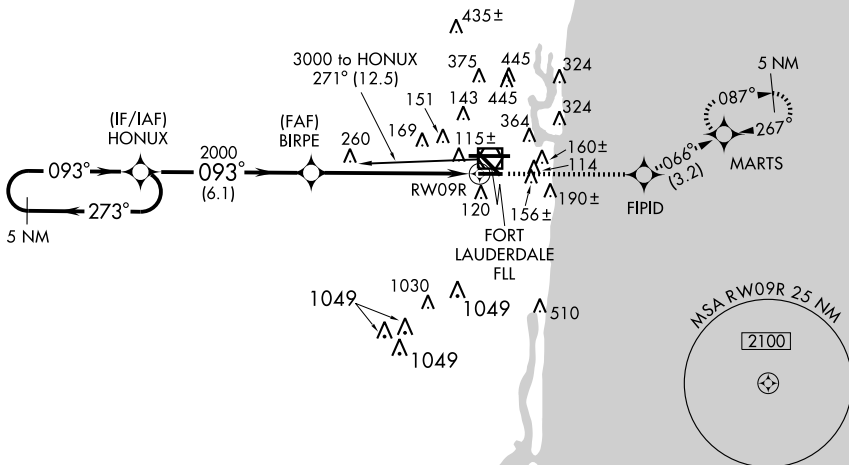
FORT LAUDERDALE/HOLLYWOOD INTL (FLL)

WAAS CH 90118 W09B	APP CRS 093°	Rwy Idg 4956 TDZE 6 Apt Elev 9
--	------------------------	---

V For uncompensated Baro-VNAV systems, LNAV/VNAV NA below -15°C (5°F) or above 49°C (120°F). Visibility reduction by helicopters NA. DME/DME RNP-0.3 NA.

MISSED APPROACH: Climb to 4000 direct FIPID and via 066° track to MARTS and hold, continue climb-in-hold to 4000.

ATIS 135.0	MIAMI APP CON 133.775 285.6	FORT LAUDERDALE TOWER 119.3 257.8	GND CON 121.4	CLNC DEL 128.4
----------------------	---------------------------------------	---	-------------------------	--------------------------



SE-3, 22 OCT 2009 to 19 NOV 2009

SE-3, 22 OCT 2009 to 19 NOV 2009

5 NM Holding Pattern	<table border="1"> <tr> <td>4000</td> <td>FIPID</td> <td>066° TRK</td> <td>MARTS</td> </tr> </table>				4000	FIPID	066° TRK	MARTS
	4000	FIPID	066° TRK	MARTS				
<p>2500 ← 273°</p> <p>→ 093°</p> <p>GS 3.00° TCH 45</p>	HONUX	BIRPE	RW09R					
	6.1 NM	6 NM						
CATEGORY	A	B	C	D				
LPV DA		334-1¼	328 (400-1¼)					
LNAV/VNAV DA		452-1½	446 (500-1½)					
LNAV MDA	580-1	574 (600-1)	580-1½ 574 (600-1½)	580-1¼ 574 (600-1¼)				
CIRCLING	680-1½	671 (700-1½)	680-2 671 (700-2)	700-2¼ 691 (700-2¼)				

