

# RNAV (GPS) Y RWY 27R

FORT LAUDERDALE/HOLLYWOOD INTL (FLL)

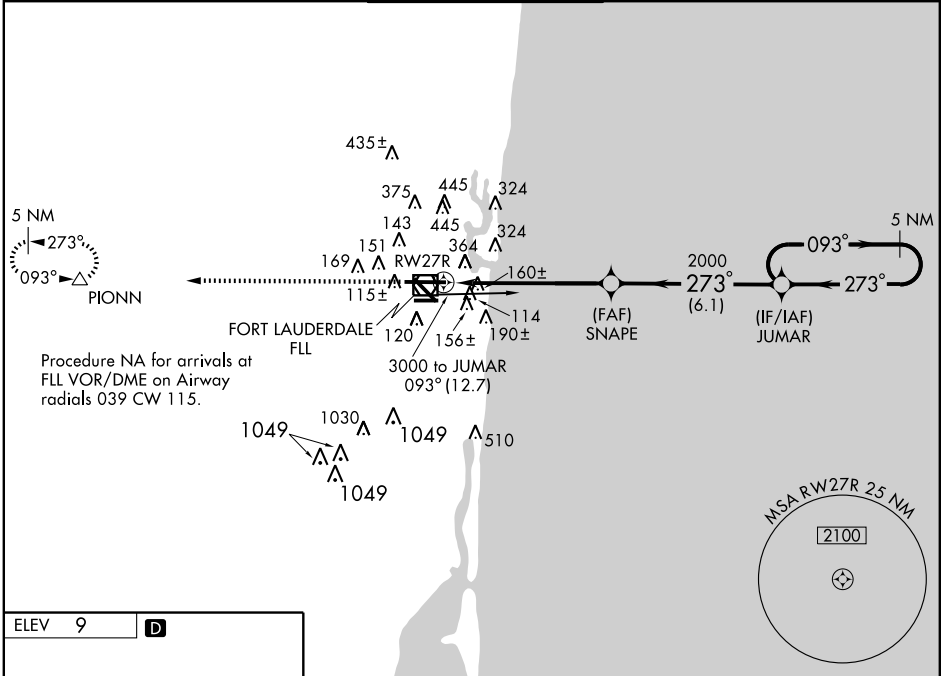
WAAS CH <b>61002</b> <b>W27A</b>	APP CRS <b>273°</b>	Rwy Idg TDZE Apt Elev	<b>8394</b> <b>7</b> <b>9</b>
--	------------------------	-----------------------------	-------------------------------------

- T** For inoperative MALS, increase LNAV Cat. A and B visibility to RVR 5000.
- A** For uncompensated Baro-VNAV systems, LNAV/VNAV NA below -15°C (5°F) or above 49°C (120°F). DME/DME RNP-0.3 NA.
- W**



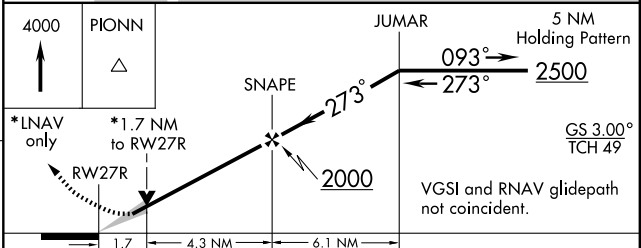
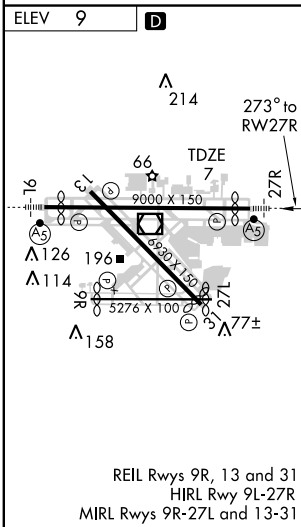
**MISSED APPROACH:**  
Climb to 4000 direct PIONN and hold, continue climb-in-hold to 4000.

ATIS <b>135.0</b>	MIAMI APP CON <b>133.775 285.6</b>	<b>FORT LAUDERDALE TOWER</b> <b>119.3 257.8</b>	GND CON <b>121.4</b>	CLNC DEL <b>128.4</b>
----------------------	---------------------------------------	--	-------------------------	--------------------------



SE-3, 22 OCT 2009 to 19 NOV 2009

SE-3, 22 OCT 2009 to 19 NOV 2009



CATEGORY	A	B	C	D
LPV DA	307/40		300 (300-¾)	
LNAV/VNAV DA	704-2		697 (700-2)	
LNAV MDA	620/40	613 (700-¾)	620/60 613 (700-1¼)	620-1½ 613 (700-1½)
CIRCLING	680-1	671 (700-1)	680-2 671 (700-2)	700-2¼ 691 (700-2¼)