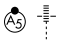


# RNAV (RNP) Z RWY 27R

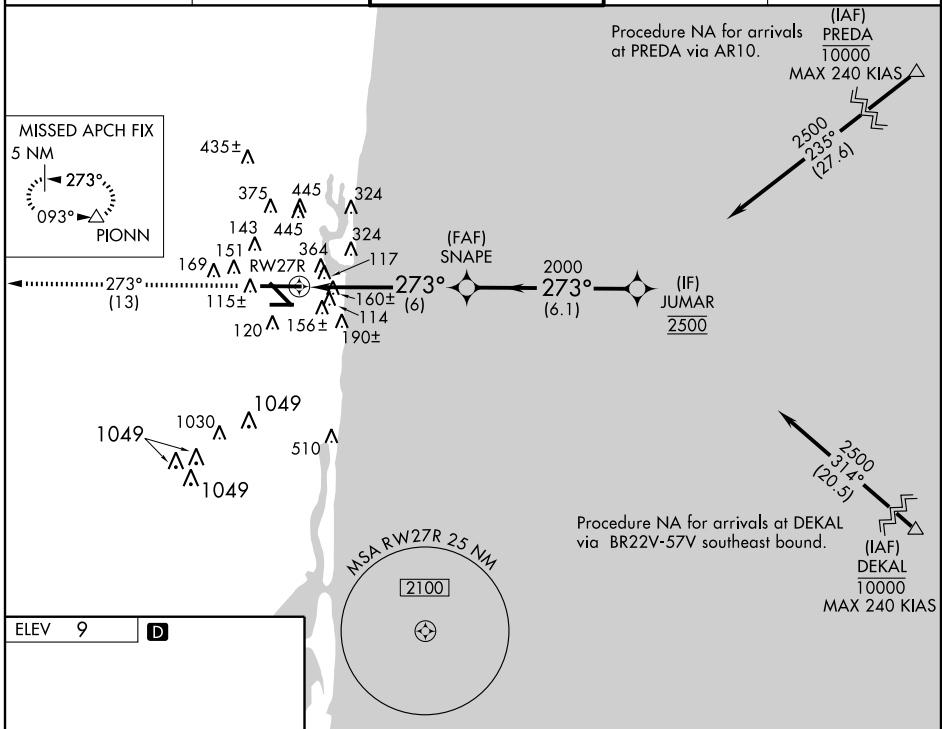
FORT LAUDERDALE/HOLLYWOOD INTL (FLL)

APP CRS <b>273°</b>	Rwy Idg <b>8394</b>
	TDZE <b>7</b>
	Apt Elev <b>9</b>

**GPS required.** For inoperative MALSR, increase RNP 0.11 all Cats visibility to RVR 5000, RNP 0.15 all Cats visibility to 1½, RNP 0.30 all Cats visibility to 2¼. For uncompensated Baro-VNAV systems, procedure NA below 4°C (40°F) or above 49°C (120°F).

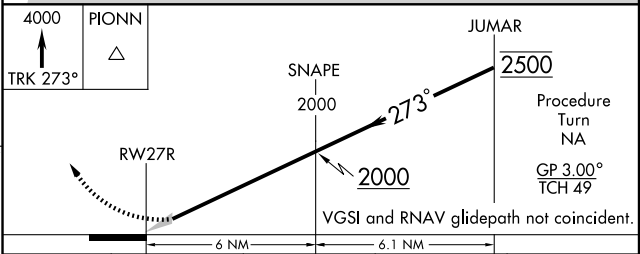
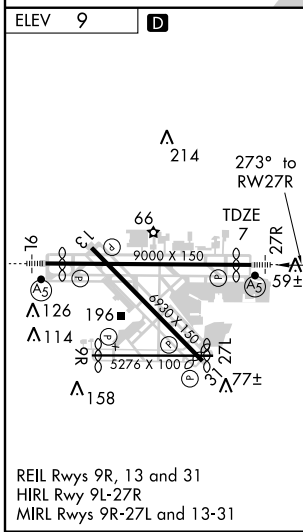
**MALSR**  
  
**MISSED APPROACH:** Climb to 4000 via track 273° to PIONN and hold, continue climb in hold to 4000.

<b>ATIS</b> <b>135.0</b>	<b>MIAMI APP CON</b> <b>133.775 285.6</b>	<b>FORT LAUDERDALE TOWER</b> <b>119.3 257.8</b>	<b>GND CON</b> <b>121.4</b>	<b>CLNC DEL</b> <b>128.4</b>
-----------------------------	--	--	--------------------------------	---------------------------------



SE-3, 22 OCT 2009 to 19 NOV 2009

SE-3, 22 OCT 2009 to 19 NOV 2009



CATEGORY	A	B	C	D
RNP 0.11 DA		296/24	289 (300-½)	
RNP 0.15 DA		404/50	397 (400-1)	
RNP 0.30 DA		618-1¾	611 (700-1¾)	

**SPECIAL AIRCRAFT & AIRCREW AUTHORIZATION REQUIRED**