

WAAS CH 69600 W31A	APP CRS 318°	Rwy Idg 6860 TDZE 9 Apt Elev 9
---------------------------------	------------------------	---

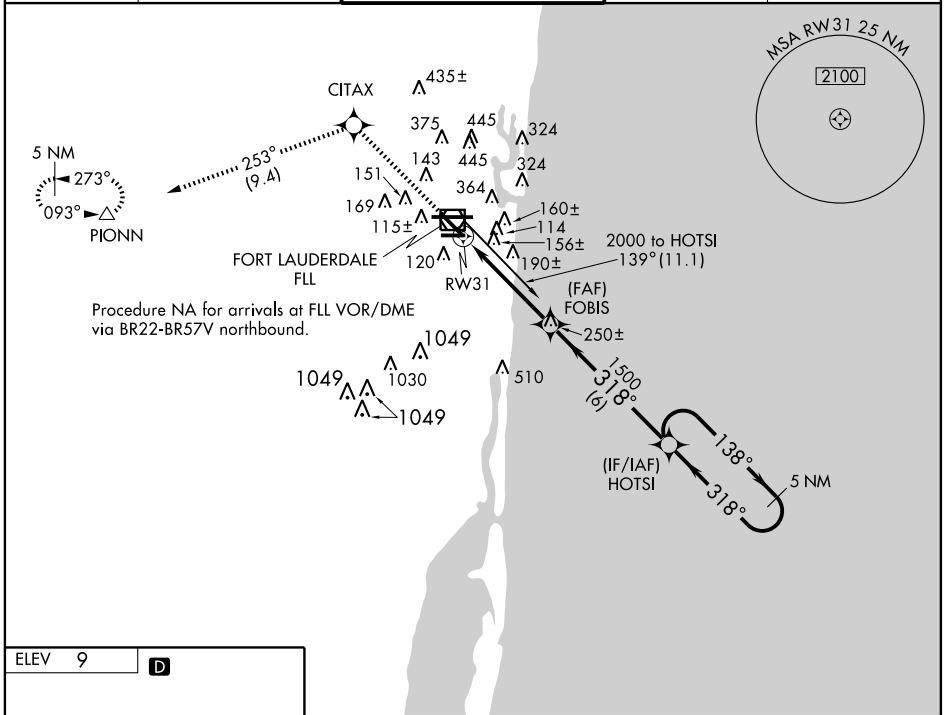
RNAV (GPS) RWY 31

FORT LAUDERDALE-HOLLYWOOD INTL (FLL)

V DME/DME RNP-0.3 NA. For uncompensated Baro-VNAV systems, LNAV/VNAV NA below -15°C (5°F) or above 49°C (119°F). When VGSI inop, procedure NA at night.

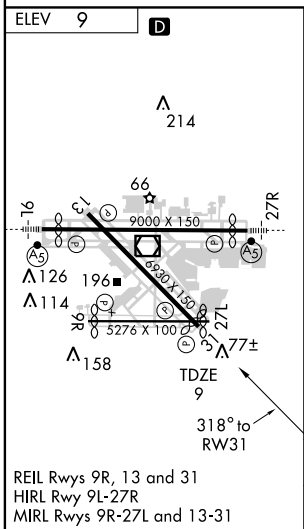
MISSED APPROACH: Climb to 4000 direct CITAX and via 253° track to PIONN and hold, continue climb-in-hold to 4000.

ATIS 135.0	MIAMI APP CON 133.775 285.6	FORT LAUDERDALE TOWER 119.3 257.8	GND CON 121.4	CLNC DEL 128.4
----------------------	---------------------------------------	---	-------------------------	--------------------------



SE-3, 22 OCT 2009 to 19 NOV 2009

SE-3, 22 OCT 2009 to 19 NOV 2009



4000	CITAX	PIONN	5 NM Holding Pattern	
↑	Δ	↑	Δ	
	253° TRK			
RW31		FOBIS	HOTSI	
4.5 NM		6 NM	138° → ← 318°	
		1500	2000	
		VGSI and RNAV glidepath not coincident.		
GS 3.00°	TCH 60			
CATEGORY	A	B	C	D
LPV DA	307-1 298 (300-1)			
LNAV/VNAV DA	506-1¾ 497 (500-1¾)			
LNAV MDA	500-1 491 (500-1)	500-1½ 491 (500-1½)	500-1½ 491 (500-1½)	500-1½ 491 (500-1½)
CIRCLING	680-1¾ 671 (700-1¾)	680-2 671 (700-2)	700-2½ 691 (700-2½)	700-2½ 691 (700-2½)