

FORT LAUDERDALE, FLORIDA

AL-744 (FAA)

WAAS CH 90313 W27B	APP CRS 273°	Rwy Idg TDZE Apt Elev	5134 6 9
--	------------------------	-----------------------------	-------------------------------------

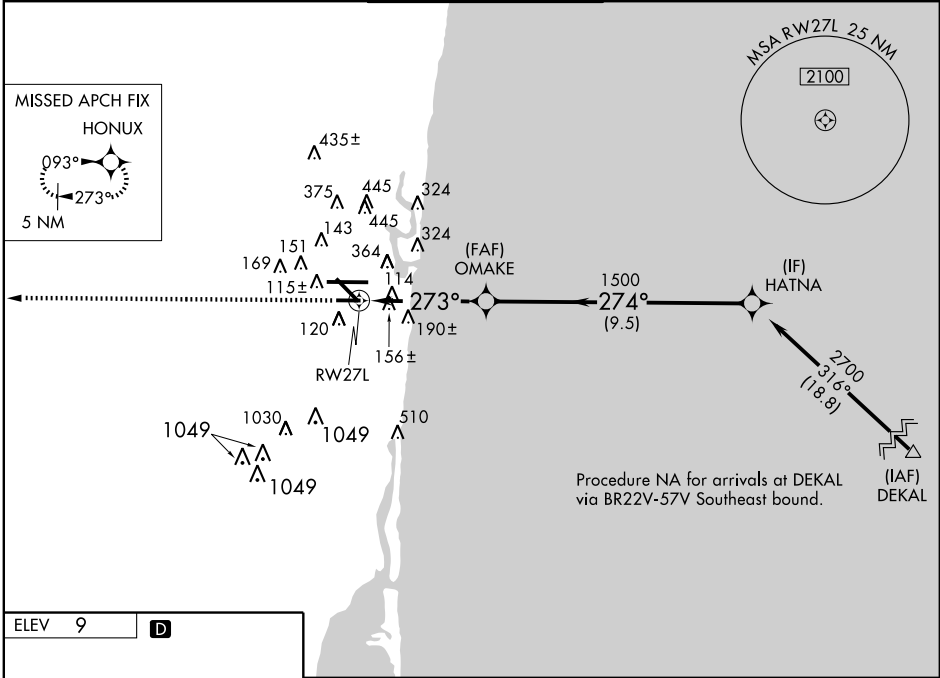
RNAV (GPS) RWY 27L

FORT LAUDERDALE/HOLLYWOOD INTL (FLL)

▼ For uncompensated Baro-VNAV systems, LNAV/VNAV NA below -15° C (5° F) or above 48° C (118° F). DME/DME RNP-0.3 NA.
▲ Visibility reduction by helicopters NA.

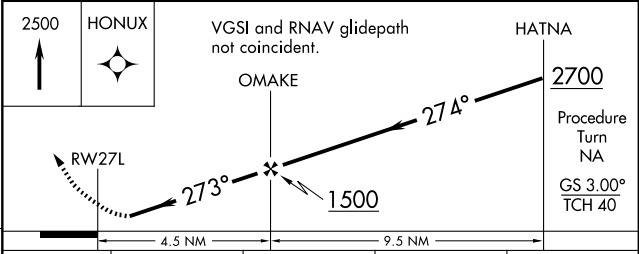
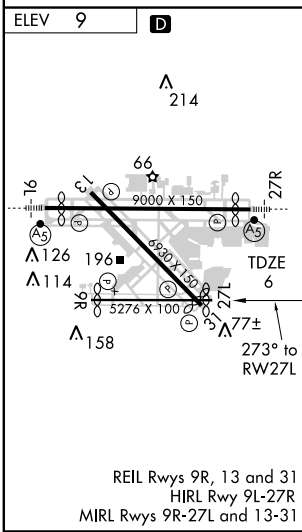
MISSED APPROACH: Climb to 2500 direct HONUX and hold.

ATIS 135.0	MIAMI APP CON 133.775 285.6	FORT LAUDERDALE TOWER 119.3 257.8	GND CON 121.4	CLNC DEL 128.4
----------------------	---------------------------------------	--	-------------------------	--------------------------



SE-3, 22 OCT 2009 to 19 NOV 2009

SE-3, 22 OCT 2009 to 19 NOV 2009



CATEGORY	A	B	C	D
LPV DA		325-1¼	319 (400-1¼)	
LNAV/VNAV DA		632-2¼	626 (700-2¼)	
LNAV MDA	500-1	494 (500-1)	500-1¼ 494 (500-1¼)	500-1½ 494 (500-1½)
CIRCLING	680-1	671 (700-1)	680-2 671 (700-2)	700-2¼ 691 (700-2¼)

FORT LAUDERDALE, FLORIDA
Orig 09183

FORT LAUDERDALE/HOLLYWOOD INTL (FLL)
26° 04' N-80° 09' W
RNAV (GPS) RWY 27L