

JINGL ONE ARRIVAL (RNAV)

FORT LAUDERDALE, FLORIDA

- FT. LAUDERDALE-HOLLYWOOD INTL ATIS 135.0
- FT. LAUDERDALE EXECUTIVE ATIS 119.85
- POMPANO BEACH AIRPARK ATIS 120.55
- NORTH PERRY ATIS 135.475
- OPA LOCKA ATIS 125.9
- MIAMI APP CON 133.775 285.60

BAGGS TRANSITION (BAGGS.JINGL1):
SEMINOLE TRANSITION (SZW.JINGL1):
TAYLOR TRANSITION (TAY.JINGL1):
VALDOSTA TRANSITION (OTK.JINGL1):

From over RXXAN via 128° track to FORTL, then as depicted to BEPAC, then via 093° heading. Expect radar vectors.

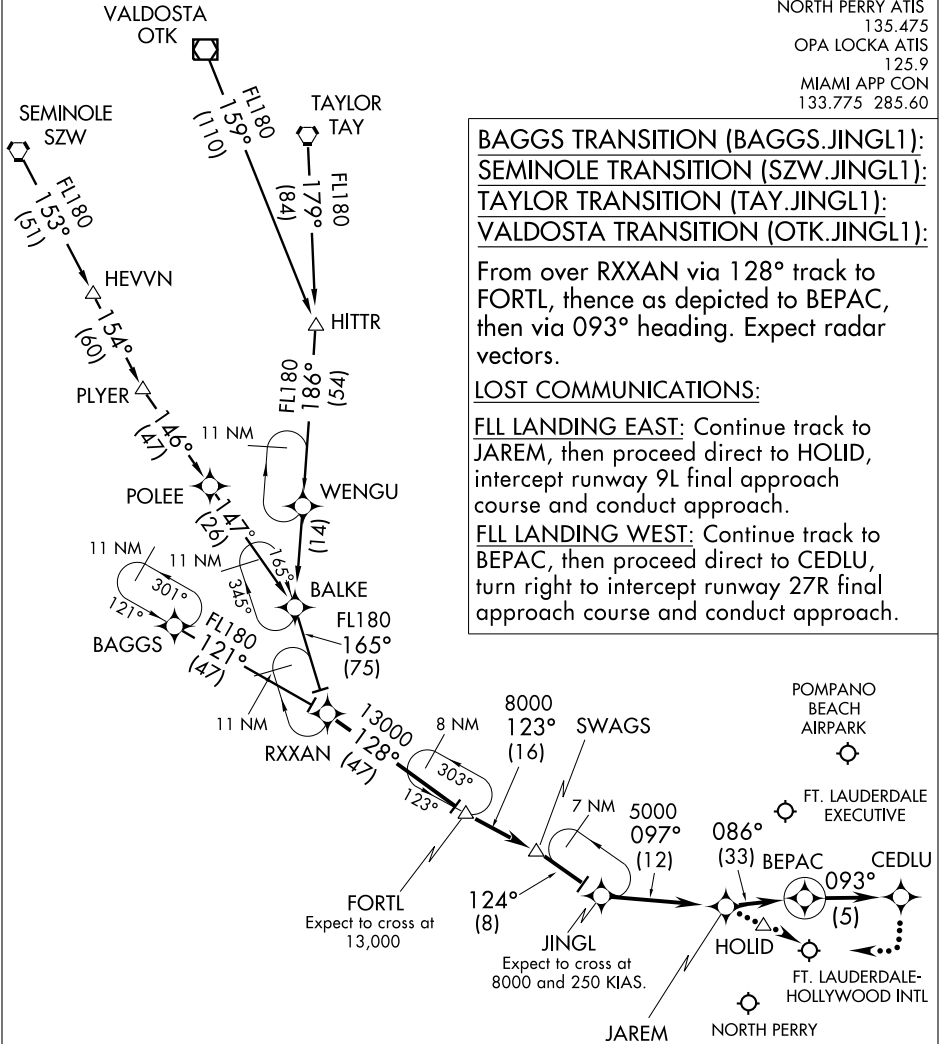
LOST COMMUNICATIONS:

FLL LANDING EAST: Continue track to JAREM, then proceed direct to HOLID, intercept runway 9L final approach course and conduct approach.

FLL LANDING WEST: Continue track to BEPAC, then proceed direct to CEDLU, turn right to intercept runway 27R final approach course and conduct approach.

SE-3, 22 OCT 2009 to 19 NOV 2009

SE-3, 22 OCT 2009 to 19 NOV 2009



- NOTE: DME/DME/IRU or GPS Required.
- NOTE: RNAV 1
- NOTE: Radar Required.
- NOTE: Landing OPF Turboprops only.
- NOTE: Turbojet/Turboprop aircraft only.
- NOTE: For non-GPS equipped aircraft, LBV, RSW and FLL must be operational.

FLL Landing West:
 Expect to cross at 7000

NOTE: Chart not to scale.

JINGL ONE ARRIVAL (RNAV)

FORT LAUDERDALE, FLORIDA