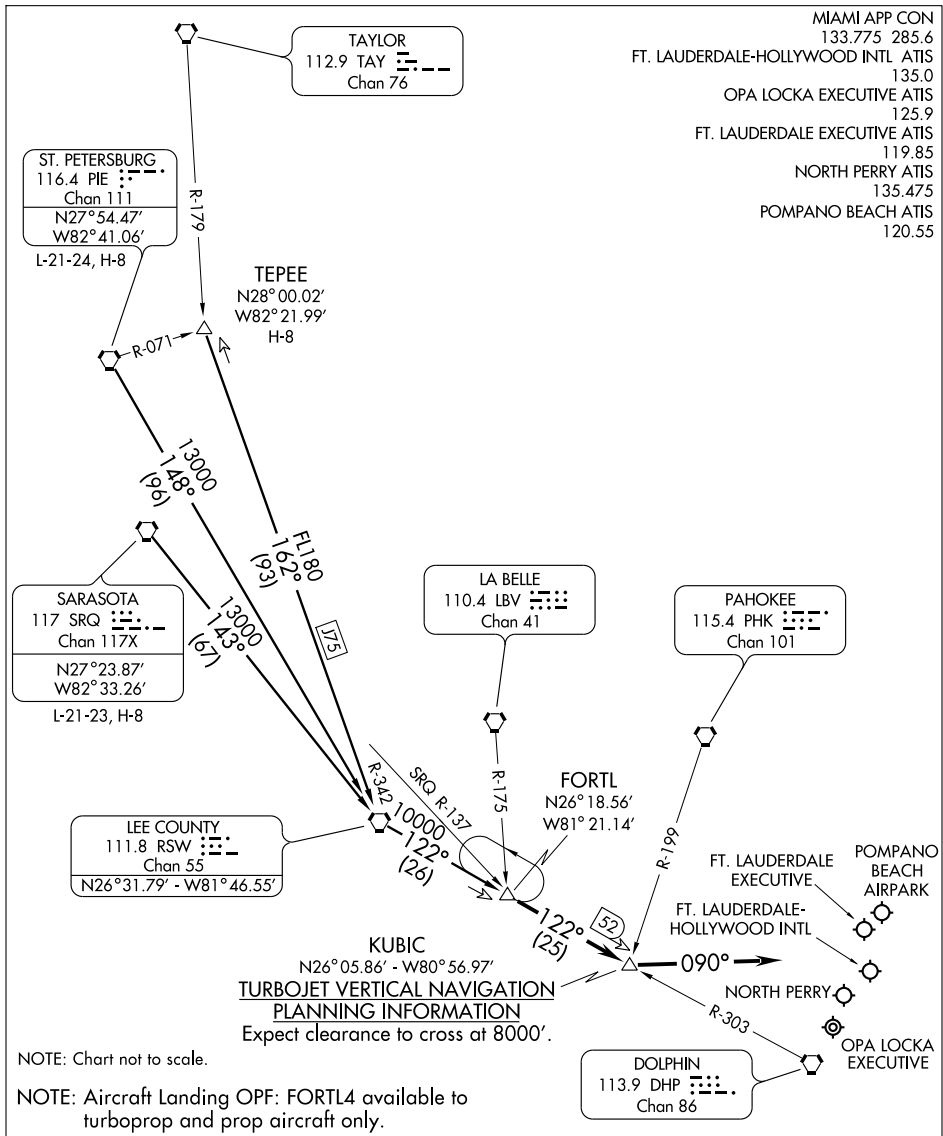


# FORTL FOUR ARRIVAL (FORTL.FORTL4)

FORT LAUDERDALE, FLORIDA



SE-3, 22 OCT 2009 to 19 NOV 2009

SE-3, 22 OCT 2009 to 19 NOV 2009

- ST. PETERSBURG TRANSITION (PIE.FORTL4):** From over PIE VORTAC via PIE R-148 and RSW R-122 to FORTL INT. Thence. . . .
- SARASOTA TRANSITION (SRQ.FORTL4):** From over SRQ VORTAC via SRQ R-143 and RSW R-122 to FORTL INT. Thence. . . .
- TEPEE TRANSITION (TEPEE.FORTL4):** From over TEPEE INT via J75 and RSW R-122 to FORTL INT. Thence. . . .
- . . . .From over FORTL INT via RSW R-122 to KUBIC INT, then heading 090°. Expect radar vectors to final approach course.

# FORTL FOUR ARRIVAL (FORTL.FORTL4)

FORT LAUDERDALE, FLORIDA