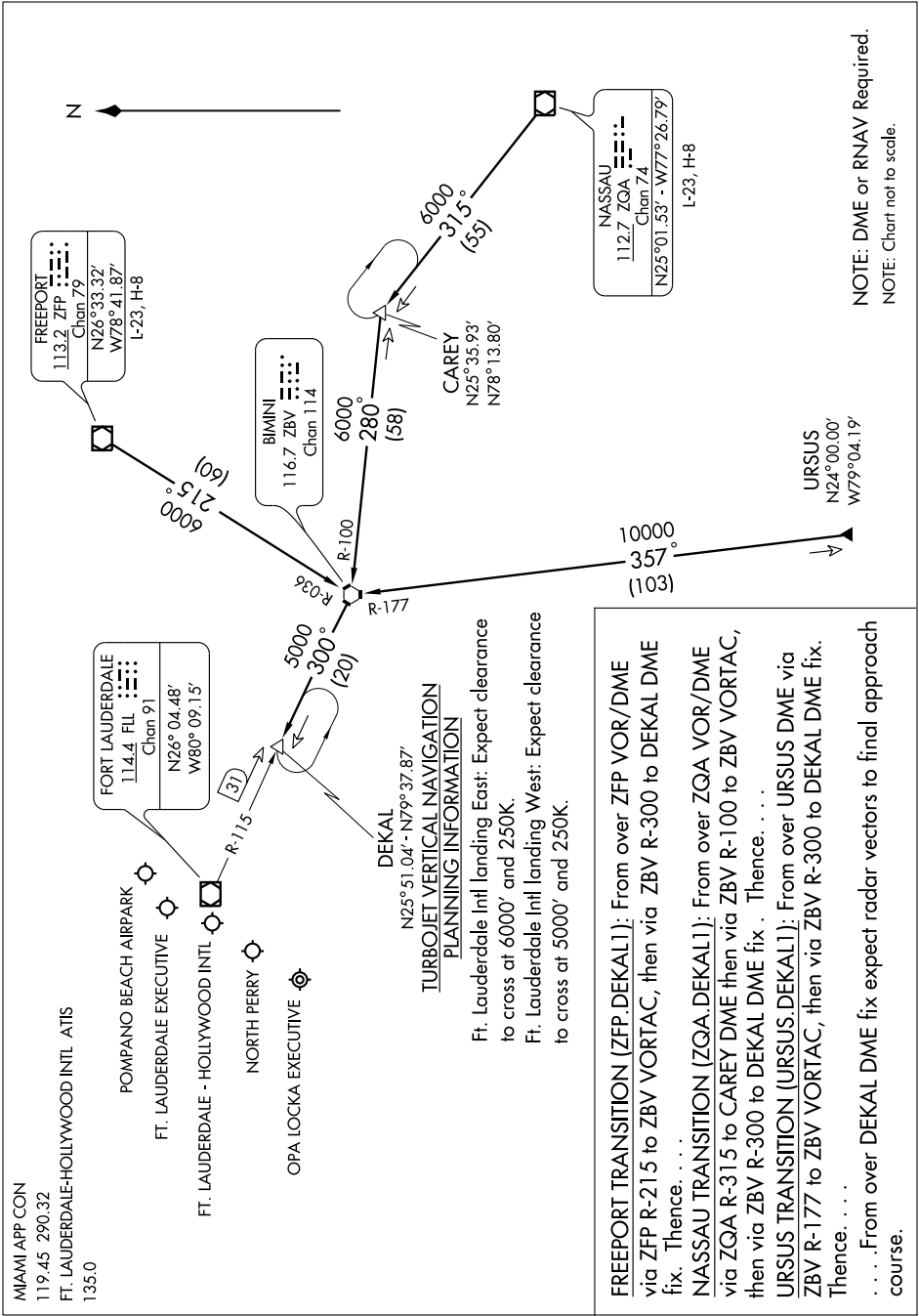


SE-3, 22 OCT 2009 to 19 NOV 2009



MIAMI APP CON
119.45 290.32
FT. LAUDERDALE-HOLLYWOOD INTL ATIS
135.0

POMPANO BEACH AIRPARK
FT. LAUDERDALE EXECUTIVE
FT. LAUDERDALE - HOLLYWOOD INTL
NORTH PERRY
OPA LOCKA EXECUTIVE

FORT LAUDERDALE
114.4 FLL
Chan 91
N26° 04.48'
W80° 09.15'

FREEPORT
113.2 ZFP
Chan 79
N26° 33.32'
W78° 41.87'
L-23, H-8

BIMINI
116.7 ZBV
Chan 114

DEKAL
N25° 51.04' - N79° 37.87'

**TURBOJET VERTICAL NAVIGATION
PLANNING INFORMATION**

Ft. Lauderdale Intl landing East: Expect clearance to cross at 6000' and 250K.
Ft. Lauderdale Intl landing West: Expect clearance to cross at 5000' and 250K.

FREEPORT TRANSITION (ZFP.DEKAL1): From over ZFP VOR/DME via ZFP R-215 to ZBV VORTAC, then via ZBV R-300 to DEKAL DME fix. Thence, . . .

NASSAU TRANSITION (ZQA.DEKAL1): From over ZQA VOR/DME via ZQA R-315 to CAREY DME then via ZBV R-100 to ZBV VORTAC, then via ZBV R-300 to DEKAL DME fix. Thence, . . .

URUSU TRANSITION (URUSU.DEKAL1): From over URUSU DME via ZBV R-177 to ZBV VORTAC, then via ZBV R-300 to DEKAL DME fix. Thence, . . .

. . . From over DEKAL DME fix expect radar vectors to final approach course.

NASSAU
112.7 ZQA
Chan 74
N25° 01.53' - W77° 26.79'
L-23, H-8

URUSU
N24° 00.00'
W79° 04.19'

NOTE: DME or RNAV Required.
NOTE: Chart not to scale.

SE-3, 22 OCT 2009 to 19 NOV 2009