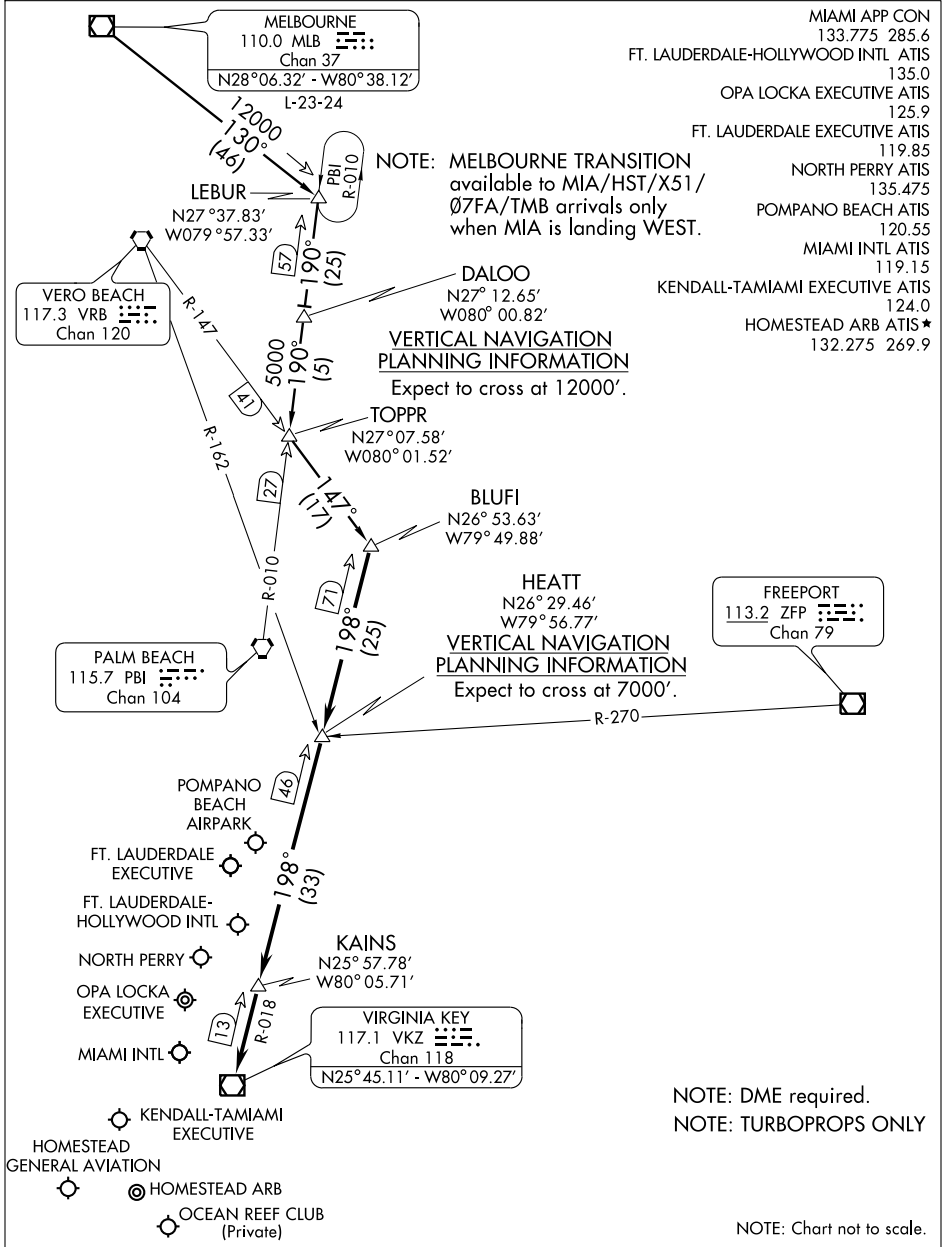


BLUFI ONE ARRIVAL (BLUFI.BLUFI1)

FORT LAUDERDALE, FLORIDA



SE-3, 22 OCT 2009 to 19 NOV 2009

SE-3, 22 OCT 2009 to 19 NOV 2009

MELBOURNE TRANSITION (MLB.BLUFI1): From over MLB VOR/DME via MLB R-130 to LEBUR INT, then via PBI R-010 to TOPPR INT, then via VRB R-147 to BLUFI INT. Thence . . .

. . . From over BLUFI INT via VKZ R-018 to VKZ VOR/DME. Expect radar vectors to final approach course after KAINS INT.

BLUFI ONE ARRIVAL (BLUFI.BLUFI1)

FORT LAUDERDALE, FLORIDA