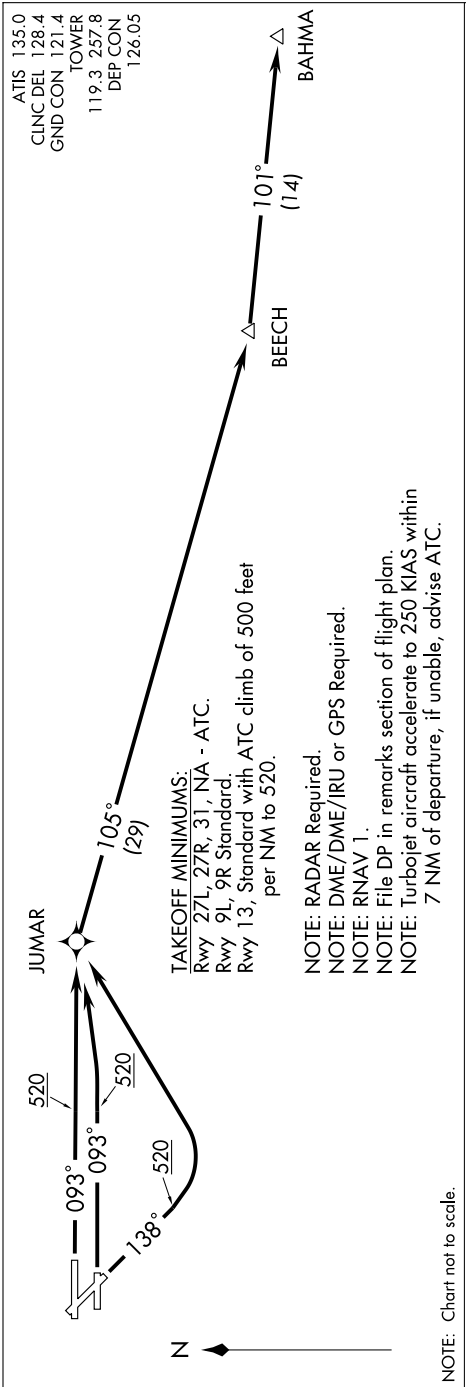


BEECH TWO DEPARTURE (RNAV)

6000Z - 22 OCT 2009 to 19 NOV 2009



DEPARTURE ROUTE DESCRIPTION

TAKEOFF RWY 9L: Climb heading 093° to 520, then direct JUMAR, then via depicted route, thence....
 TAKEOFF RWY 9R: Climb heading 093° to 520, then left turn direct JUMAR, then via depicted route, thence....
 TAKEOFF RWY 13: Climb heading 138° to 520, then left turn direct JUMAR, then via depicted route, thence....
Maintain 3000 or as assigned by ATC. Expect clearance to filed altitude 10 minutes after departure.

TAKE-OFF OBSTACLE NOTES:

Rwy 9L: Railroad, light pole and antenna on building beginning 469' from DER, 379' left of centerline, up to 43' AGL/47' MSL. Light pole 1332' from DER, 634' right of centerline, 42' AGL/46' MSL. Tree 1977' from DER, 272' right of centerline, 55' AGL/59' MSL.

Rwy 9R: Light pole 545' from DER, 335' left of centerline, 27' AGL/41' MSL. Tree 783' from DER, 396' left of centerline, 30' AGL/44' MSL. Antenna on building, fence, light pole, and multiple trees beginning 254' from DER, 133' right of centerline, up to 56' AGL/70' MSL.

Rwy 13: Multiple trees beginning 844' from DER, 206' left of centerline, up to 76' AGL/80' MSL. Antenna on building 534' from DER, 431' left of centerline, 11' AGL/20' MSL. Pole 910' from DER, on centerline, 30' AGL/39' MSL. Railroad crossing arm 1104' from DER, 14' right of centerline, 42' AGL/56' MSL. Multiple trees and light poles beginning 563' from DER, 53' right of centerline, up to 81' AGL/ 95' MSL.