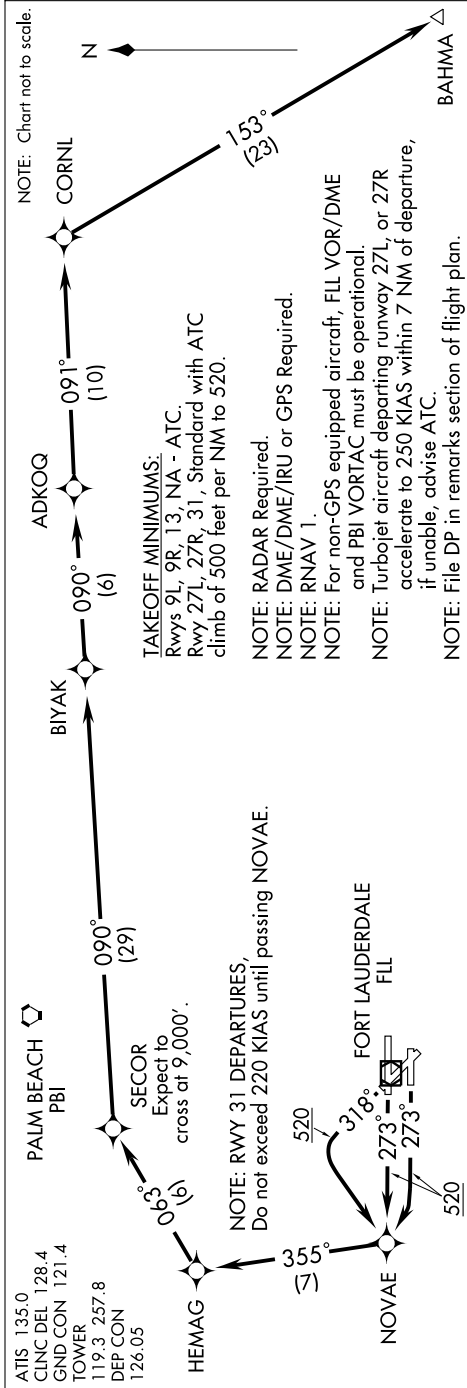


6000Z 22 OCT 2009 to 19 NOV 2009



DEPARTURE ROUTE DESCRIPTION

TAKE-OFF RWY 27L: Climb heading 273° to 520, then right turn direct NOVAE, then via depicted route, thence....
TAKE-OFF RWY 27R: Climb heading 273° to 520, then direct NOVAE, then via depicted route, thence....
TAKE-OFF RWY 31: Climb heading 318° to 520, then left turn direct NOVAE, maintain 220 KIAS until passing NOVAE, then right turn via 355° track to HEMAG, then via depicted route, thence....
Maintain 3000 or as assigned by ATC. Expect clearance to filed altitude 10 minutes after departure.

TAKE-OFF OBSTACLE NOTES:

Rwy 27L: Fence 154' from DER, 120' left of centerline, 5' AGL/13' MSL. Road 212' from DER, 80' left of centerline, 11' AGL/20' MSL. Sign, multiple buildings, poles and trees beginning 622' from DER, 227' left of centerline, up to 97' AGL/106' MSL. Bush, multiple light poles, trees, and towers beginning 221' from DER, 41' right of centerline, up to 105' AGL/114' MSL.
Rwy 27R: Antenna on building, road, railroad, and sign beginning 262' from DER, 6' left of centerline, up to 37' AGL/46' MSL. Multiple trees beginning 1206' from DER, 279' left of centerline, up to 93' AGL/97' MSL. Road 584' from DER, 557' right of centerline, 24' AGL/33' MSL. Multiple trees beginning 2288' from DER, 848' right of centerline, up to 103' AGL/112' MSL.
Rwy 31: Rod on tower 299' from DER, 382' left of centerline, 14' AGL/23' MSL. Tree 1332' from DER, 458' left of centerline, 34' AGL/43' MSL. Road 3384' from DER, 711' left of centerline, 84' AGL/94' MSL. Multiple trees and poles beginning 1180' from DER, 405' right of centerline, up to 111' AGL/116' MSL.

SE-3, 22 OCT 2009 to 19 NOV 2009