

VANDALIA, ILLINOIS

AL-743 (FAA)

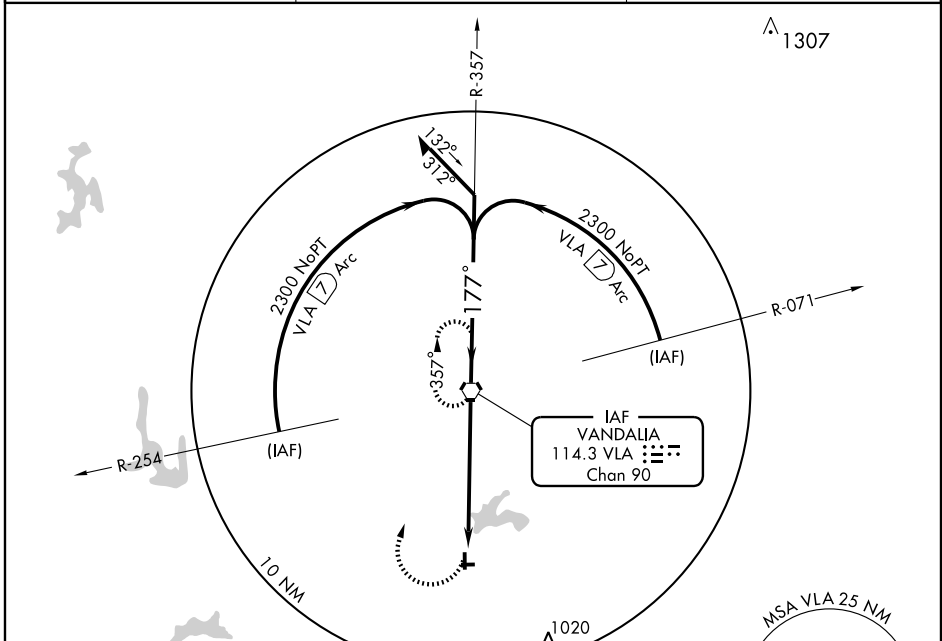
VORTAC VLA 114.3 Chan 90	APP CRS 177°	Rwy Idg 3752 TDZE 534 Apt Elev 537
--	------------------------	---

VOR RWY 18
VANDALIA MUNI (VLA)

⚠ NA Use Salem-Leckrone altimeter setting. If not received, use Centralia Muni altimeter setting and increase all MDAs 20 feet.

MISSED APPROACH: Climbing right turn to 2300 direct VLA VORTAC and hold.

SALEM-LECKRONE AWOS-3 118.525	KANSAS CITY CENTER 124.3 269.15	UNICOM 122.8 (CTAF) 0
--	---	--



EC-3, 22 OCT 2009 to 19 NOV 2009

EC-3, 22 OCT 2009 to 19 NOV 2009

ELEV 537

177° 5.8 NM from FAF

81 TDZE 534

3752 X 100

3001 X 75

27

582

36

REIL Rwy 18 and 27 **0**
MIRL Rwy 9-27 and 18-36 **0**

FAF to MAP 5.8 NM

Knots	60	90	120	150	180
Min:Sec	5:48	3:52	2:54	2:19	1:56

2300	VLA 114.3	VORTAC			Remain within 10 NM
VLA 5.8		357°	177°	2300	2300
5.8 NM					

CATEGORY	A	B	C	D
S-18	1140-1	606 (700-1)	1140-1¾ 606 (700-1¾)	NA
CIRCLING	1160-1	623 (700-1)	1160-1¾ 623 (700-1¾)	NA

VANDALIA, ILLINOIS
Amdt 11B 06187

38° 59' N-89° 10' W

VANDALIA MUNI (VLA)
VOR RWY 18