

# WYLIE FIVE DEPARTURE

SL-742 (FAA)

DALLAS/ DALLAS EXECUTIVE (R.B.D)

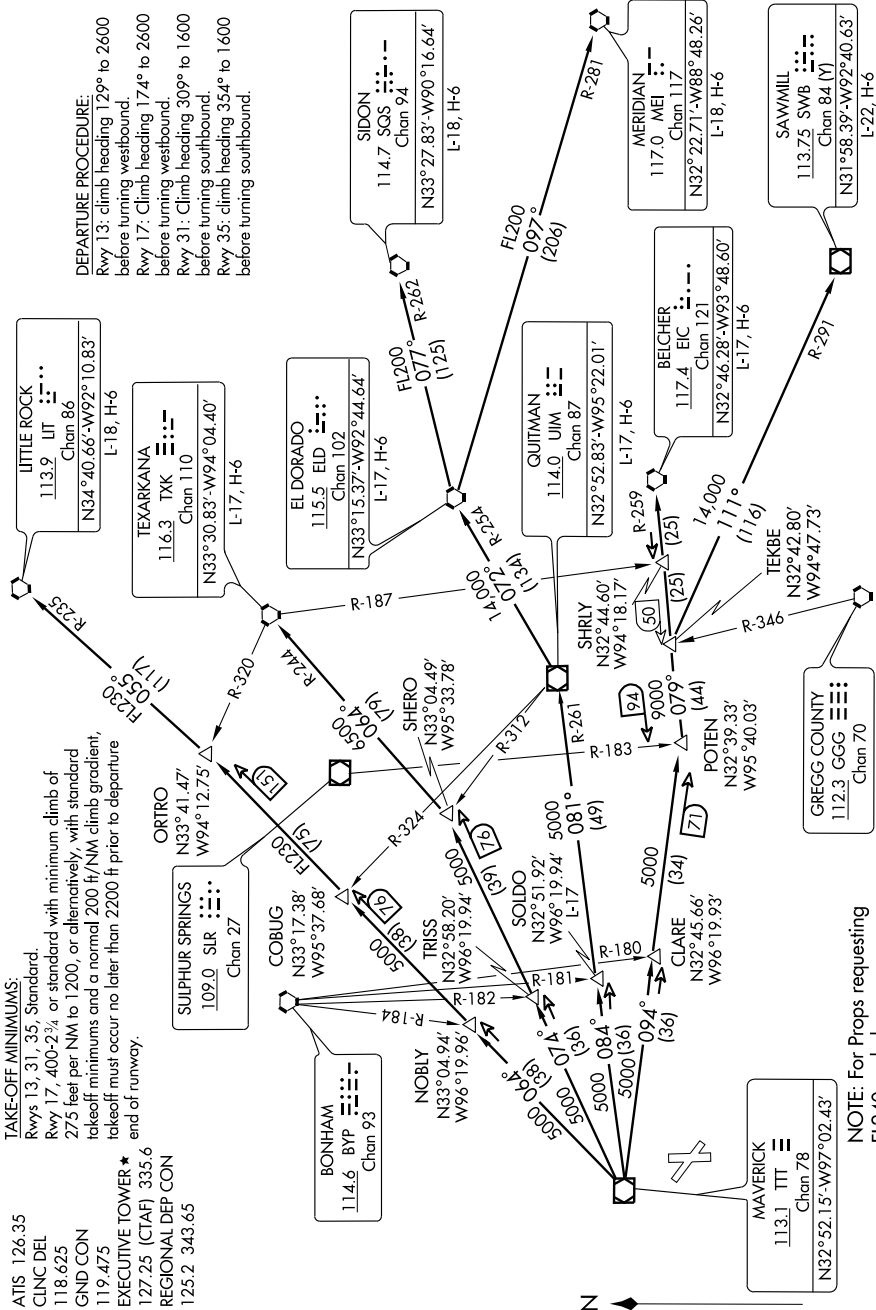
DALLAS, TEXAS

60C SC-2, 22 OCT 2009 to 19 NOV 2009

ATIS 126.35  
 CLNC DEL 118.625  
 GND CON 119.475  
 EXECUTIVE TOWER ★ 127.25 (CTAF) 335.6  
 REGIONAL DEP CON 125.2 343.65

**TAKE-OFF MINIMUMS:**  
 Rwy 13, 31, 35, Standard.  
 Rwy 17, 400'-2¼, or standard with minimum climb of 275 feet per NM to 1200, or alternatively, with standard takeoff minimums and a normal 200 ft/NM climb gradient, takeoff must occur no later than 2200 ft prior to departure end of runway.

**DEPARTURE PROCEDURE:**  
 Rwy 13: climb heading 129° to 2600 before turning westbound.  
 Rwy 17: Climb heading 174° to 2600 before turning westbound.  
 Rwy 31: Climb heading 309° to 1600 before turning southbound.  
 Rwy 35: climb heading 354° to 1600 before turning southbound.



**NOTE:** For Props requesting FL240 and above.

(NARRATIVE ON FOLLOWING PAGE)

NOTE: Chart not to scale

60C SC-2, 22 OCT 2009 to 19 NOV 2009