

# VOR RWY 31

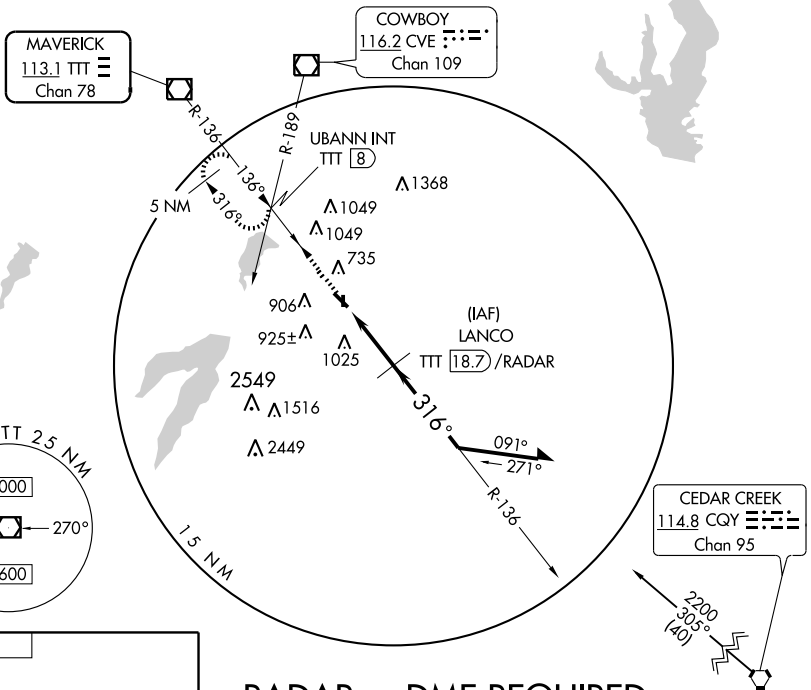
DALLAS EXECUTIVE (R.B.D)

VOR/DME TTT <b>113.1</b> Chan <b>78</b>	APP CRS <b>316°</b>	Rwy Idg TDZE <b>658</b> Apt Elev <b>660</b>
---	------------------------	---

**▼** If local altimeter setting not received, use Dallas-Love Field altimeter setting and increase all MDAs 60 feet. VDP NA when using Dallas-Love Field altimeter setting. Radar or DME required.

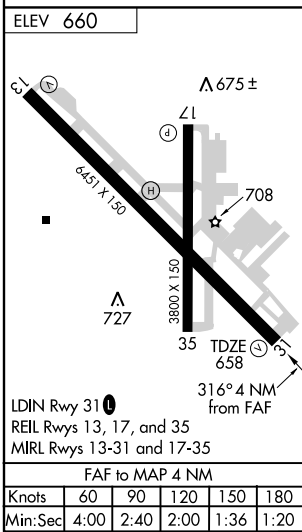
**MISSED APPROACH:** Climb to 2500 via TTT R-136 to UBANN INT/TTT 8 DME and hold.

ATIS <b>126.35</b>	REGIONAL APP CON <b>125.2 343.65</b>	EXECUTIVE TOWER ★ <b>127.25</b> (CTAF) <b>335.6</b>	GND CON <b>119.475</b>	CLNC DEL <b>118.625</b>	UNICOM <b>122.95</b>
-----------------------	---	--	---------------------------	----------------------------	-------------------------

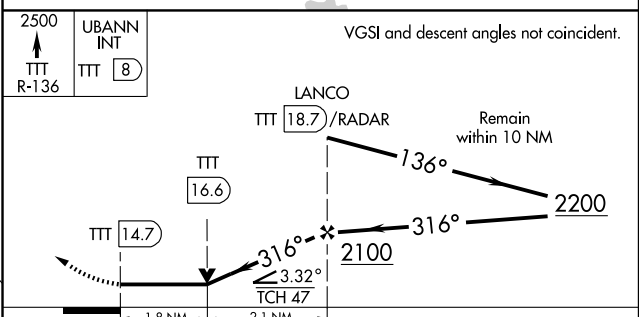


SC-2, 22 OCT 2009 to 19 NOV 2009

SC-2, 22 OCT 2009 to 19 NOV 2009



## RADAR or DME REQUIRED



CATEGORY	A	B	C	D
S- 31	1280-1 622 (700-1)		1280-1¼ 622 (700-1¼)	1280-2 622 (700-2)
CIRCLING	1280-1 620 (700-1)		1280-1¼ 620 (700-1¼)	1340-2¼ 680 (700-2¼)